

APPENDIX A

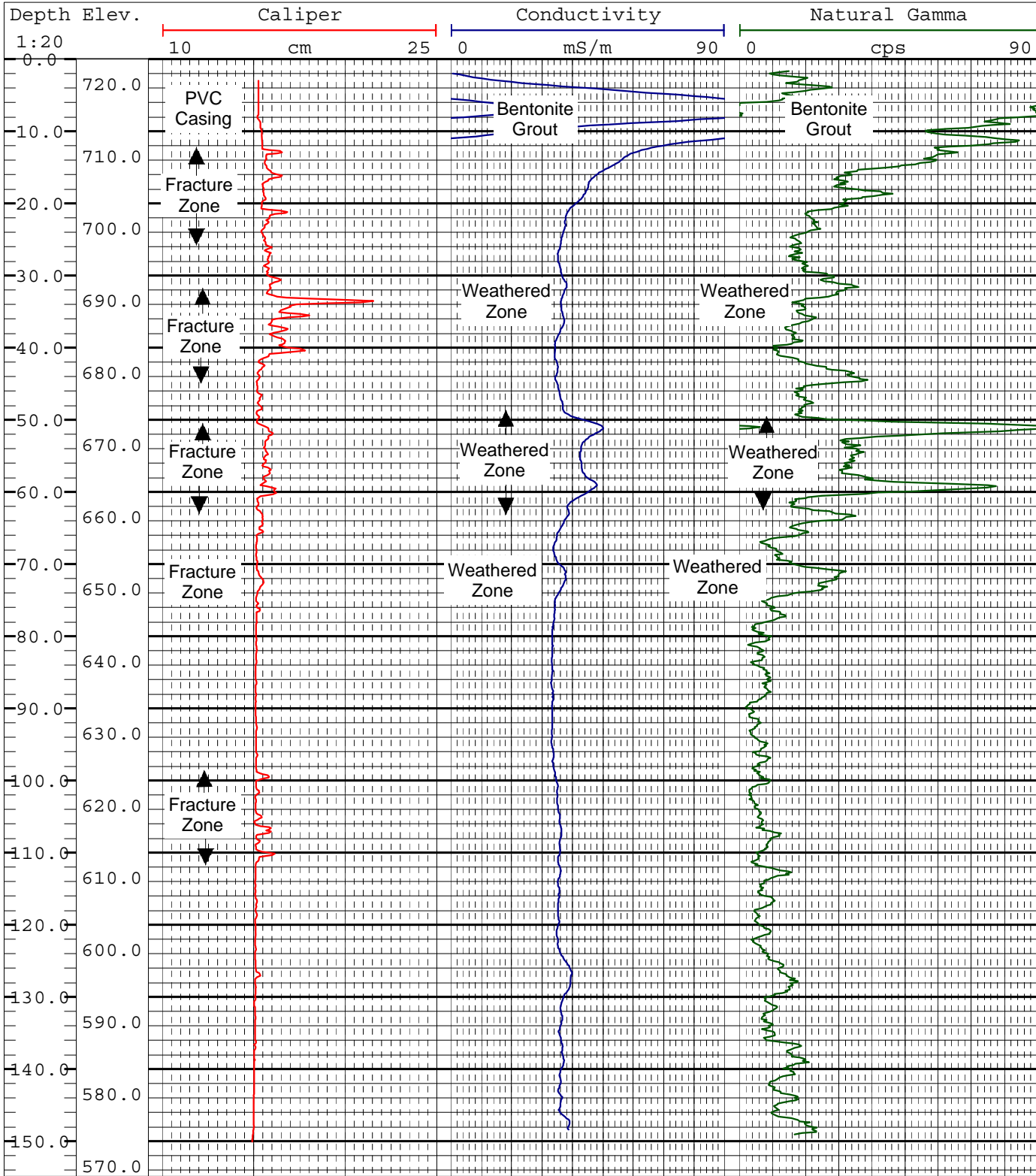
Downhole Geophysical Logs


CO City of Wildwood WELL MW-02 LOC 789943 ft. E, 1006515 ft. N CTY Wildwood STE Missouri PROJECT NO. M08044		COMPANY City of Wildwood WELL ID MW-02 CITY Wildwood STATE Missouri COUNTRY U.S.A.		LOCATION Approximately 80' N of Sreeker Rd. and 180' W of the former Primm Residence. 789943 ft. E, 1006515 ft. N, Missouri East State Plane Coordinates, NAD83 Datum.		OTHER SERVICES EM Conductivity, Natural Gamma, and Caliper Logs	
PERMANENT DATUM N/A LOG MEAS. FROM Ground Surface DRILLING MEAS. FROM Ground Surface		SEC TWP RGE		ELEVATION 723.5' ABOVE PERM. DATUM		K.B. N/A D.F. N/A GL. N/A	
DATE 10/22/09		TYPE FLUID IN HOLE Water		TYPE LOG Conductivity, Gamma, Caliper		SALINITY N/A DENSITY N/A LEVEL N/A MAX. REC. TEMP. N/A SEAL NUMBER NA	
DEPTH-DRILLER 151' from GS DEPTH-LOGGER 150.43' from GS BTM LOGGED INTERVAL 150.1' from GS TOP LOGGED INTERVAL 1.64' from GS OPERATING RIG TIME N/A RECORDED BY Gabriel Hebert WITNESSED BY Mark Breiting							
RUN NO. BOREHOLE RECORD BIT FROM TO CASING RECORD SIZE WGT. FROM TO							



PROJECT NAME: Sreeker Forrest Phase III
 PROJECT NUMBER: M08044

©2009 MUNDSELL & ASSOCIATES, INC.





Mundell
Consulting Professionals
For the Earth and the Environment

110 South Downey Avenue
Indianapolis, Indiana 46219
317-630-9060, fax 317-630-9065
www.MundellAssociates.com

PROJECT NAME: Stecker Forrest Phase III
PROJECT NUMBER: M08044

©2009 MUNDSELL & ASSOCIATES, INC.

CO City of Wildwood WELL MW-06 LOC 790485 ft. E, 1007754 ft. N CTY Wildwood STE Missouri PROJECT NO. M08044		COMPANY City of Wildwood WELL ID MW-06 CITY Wildwood STATE Missouri COUNTRY U.S.A.	
PERMANENT DATUM N/A LOG MEAS. FROM Ground Surface DRILLING MEAS. FROM Ground Surface DATE 10/21/09		LOCATION Approximately 180' NW of the horse barn. 790485 ft. E, 1007754 ft. N, Missouri East State Plane Coordinates, NAD83 Datum. SEC TWP RGE	
TYPE LOG Conductivity, Gamma, Caliper DEPTH-DRILLER 47' from GS DEPTH-LOGGER 45.63' from GS BTM LOGGED INTERVAL 45.07' from GS TOP LOGGED INTERVAL 1.69' from GS OPERATING RIG TIME N/A RECORDED BY Gabriel Hebert WITNESSED BY Mark Breiting		ELEVATION 636.5' ABOVE PERM. DATUM OTHER SERVICES EM Conductivity, Natural Gamma, and Caliper Logs	
TYPE LOG Conductivity, Gamma, Caliper DEPTH-DRILLER 47' from GS DEPTH-LOGGER 45.63' from GS BTM LOGGED INTERVAL 45.07' from GS TOP LOGGED INTERVAL 1.69' from GS OPERATING RIG TIME N/A RECORDED BY Gabriel Hebert WITNESSED BY Mark Breiting		TYPE FLUID IN HOLE Water SALINITY N/A DENSITY N/A LEVEL N/A MAX. REC. TEMP. N/A SEAL NUMBER NA	
RUN NO. BOREHOLE RECORD BIT FROM TO CASING RECORD SIZE WGT. FROM TO			

