


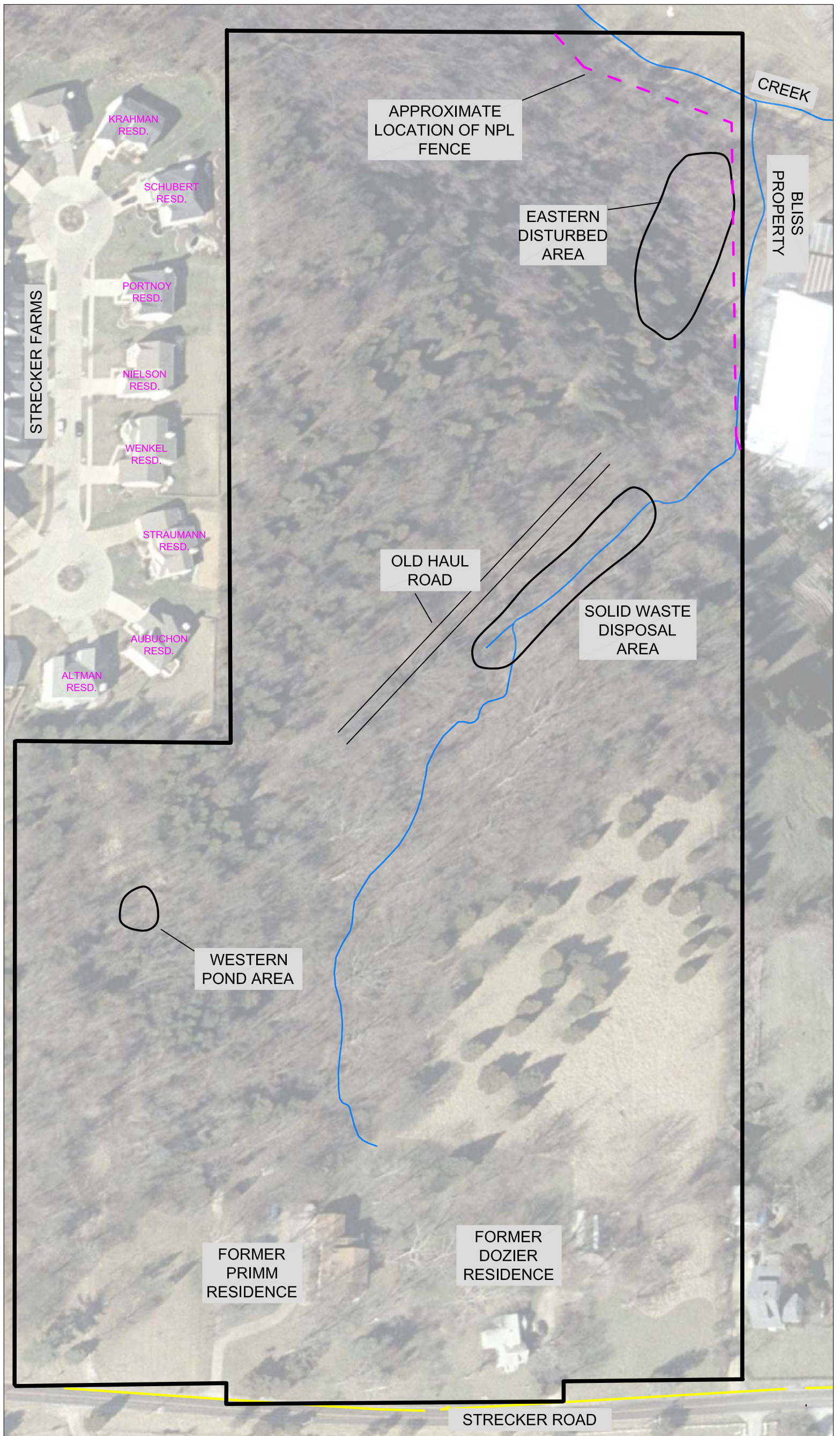




LEGEND

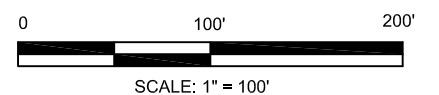
-  G
GAS LINE
-  CREEK BED
-  PROPERTY LINE
-  APPROXIMATE NPL SITE LINE



Notes:

"RI-" prefix refers to soil borings advanced as part of the 1983 Ellisville Superfund Site Remedial Investigation to distinguish them from Mundell borings.

Aerial photograph from Google Earth (2009). Property line provided by The Sterling Company (2009) and verified by Surveying Solutions, Inc. (2009).



110 South Downey Avenue
Indianapolis, Indiana 46219
317-630-9060, fax 317-630-9065
www.MundellAssociates.com

PROJECT NO.:	M08044	FILE NO.:	Boring_Well Loc.dwg
DRAWING:	FIG 3	PLOT SIZE:	11"X17"
DRAFTED BY:	MEB	DATE:	1-12-2010
CHECKED BY:	MEB	DATE:	2-24-2010
APPROVED BY:	JAM	DATE:	2-28-2010

SITE PLAN

PROPOSED STRECKER FOREST
DEVELOPMENT SITE

WILDWOOD, MISSOURI

FIGURE
3