

# For Lease

## Whitecourt Power Centre

SE Corner of Dahl Drive & 52 Avenue  
Whitecourt, Alberta

partnership.  
performance.

**AVISON  
YOUNG**

Intelligent  
Real Estate Solutions



### PROPERTY HIGHLIGHTS

- Outstanding retail space for lease in Wal-Mart anchored shopping centre
- Prime location and exposure along Dahl Drive with traffic counts in excess of 13,000 vehicles per day
- Pad and CRU opportunities are available
- Whitecourt is located on the "Canamex Corridor" connecting Edmonton to Grande Prairie

**NORTHERN**  
Shopping Centre Development Limited

# Whitecourt Power Centre

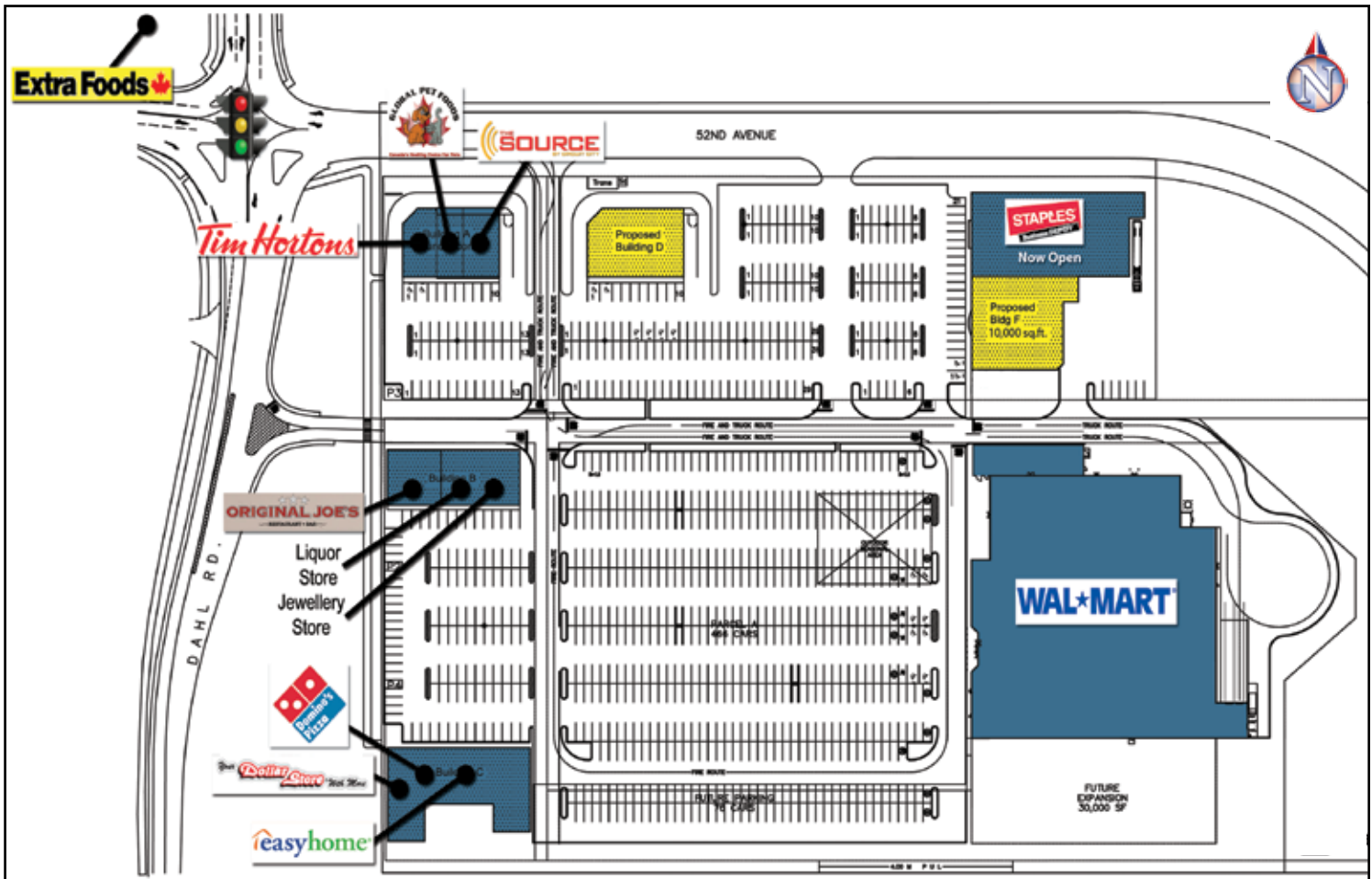
SE Corner of Dahl Drive & 52 Avenue  
Whitecourt, Alberta



## Site Details

- New pad and CRU space is available with high exposure to an all-directional intersection
- Whitecourt has a primary trade area of 10,430 people (2006) with an estimated secondary trade area of over 42,000 people (2006)
- Whitecourt's main industries are Forestry, Oil and Gas, and Tourism

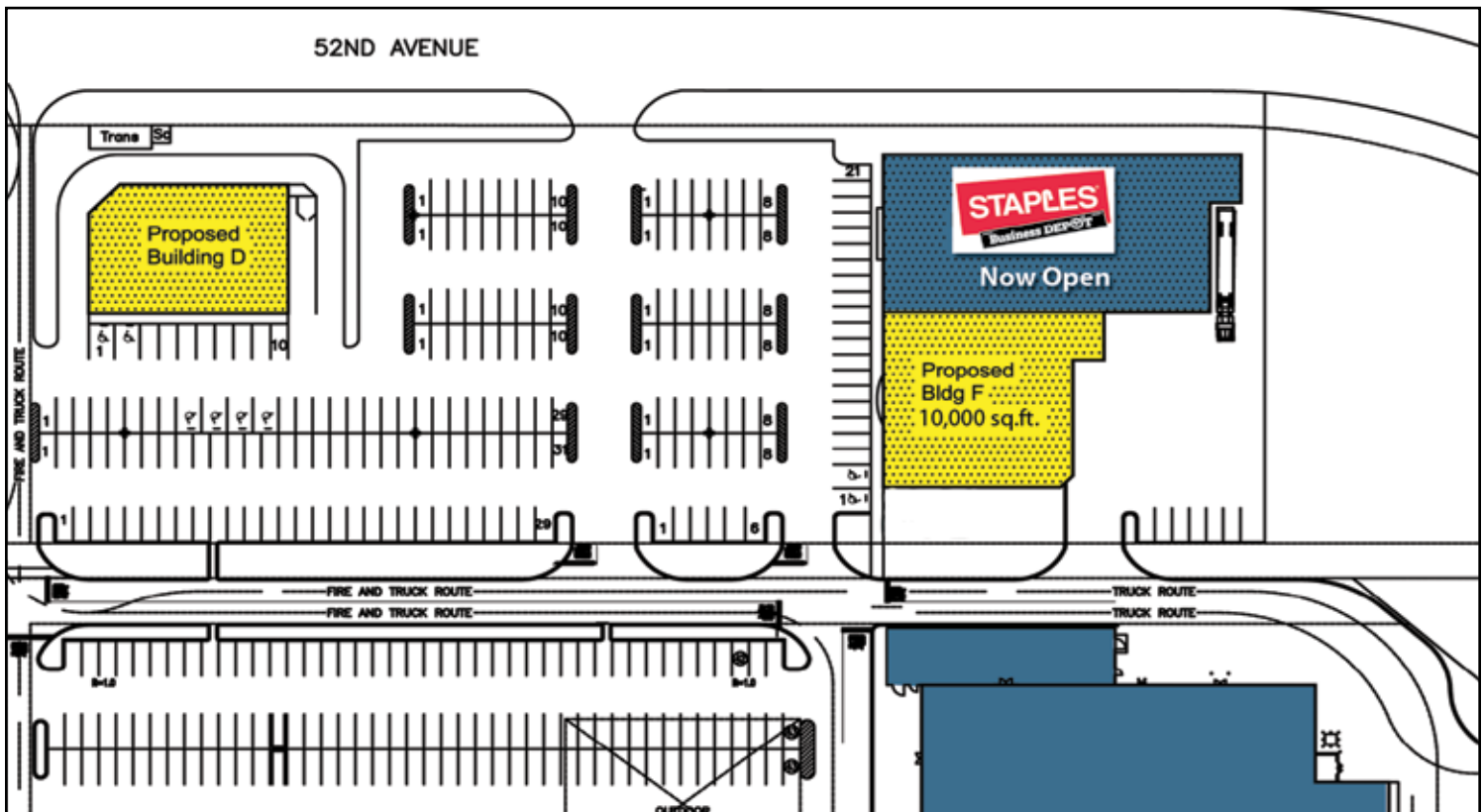
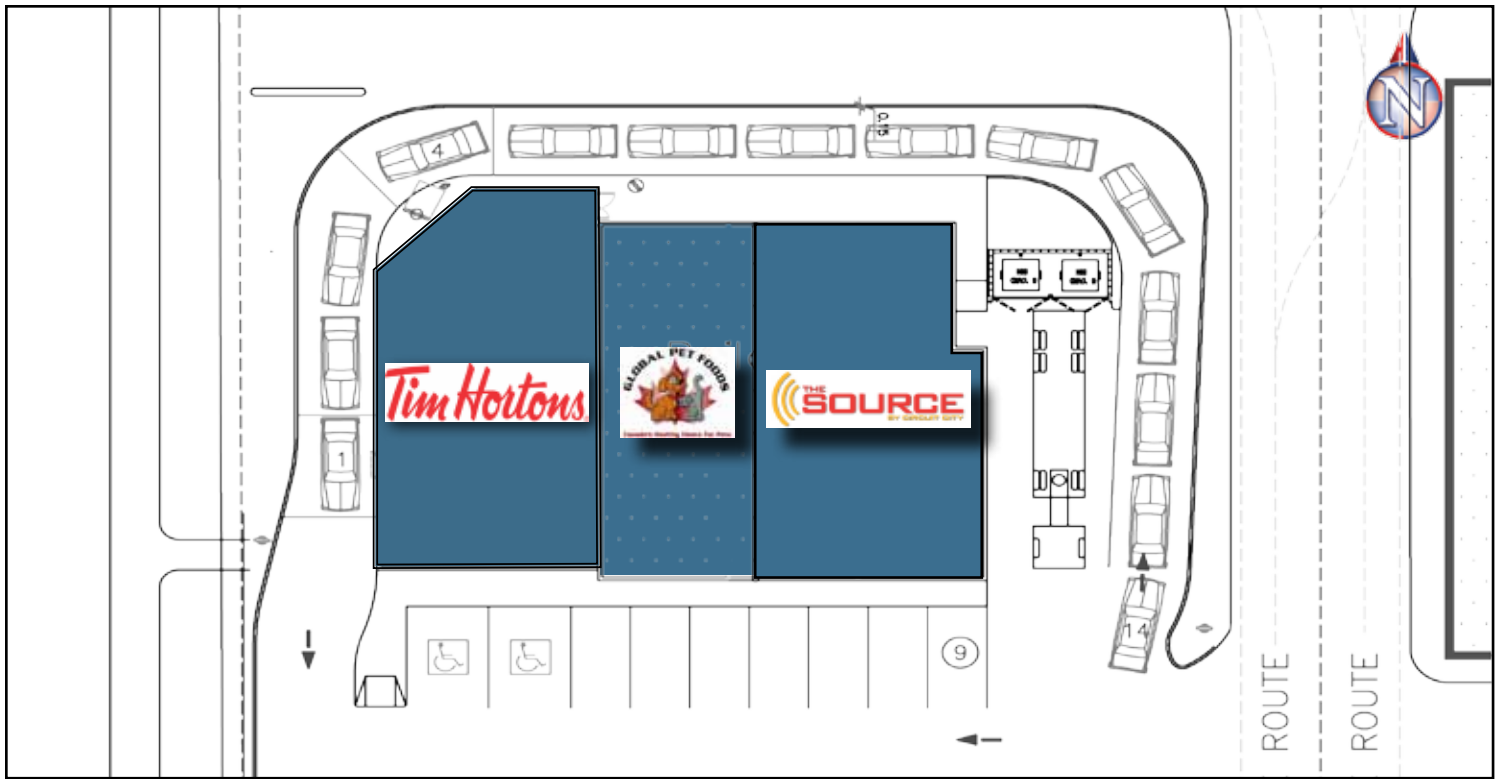
## Site Plan





# Whitecourt Power Centre

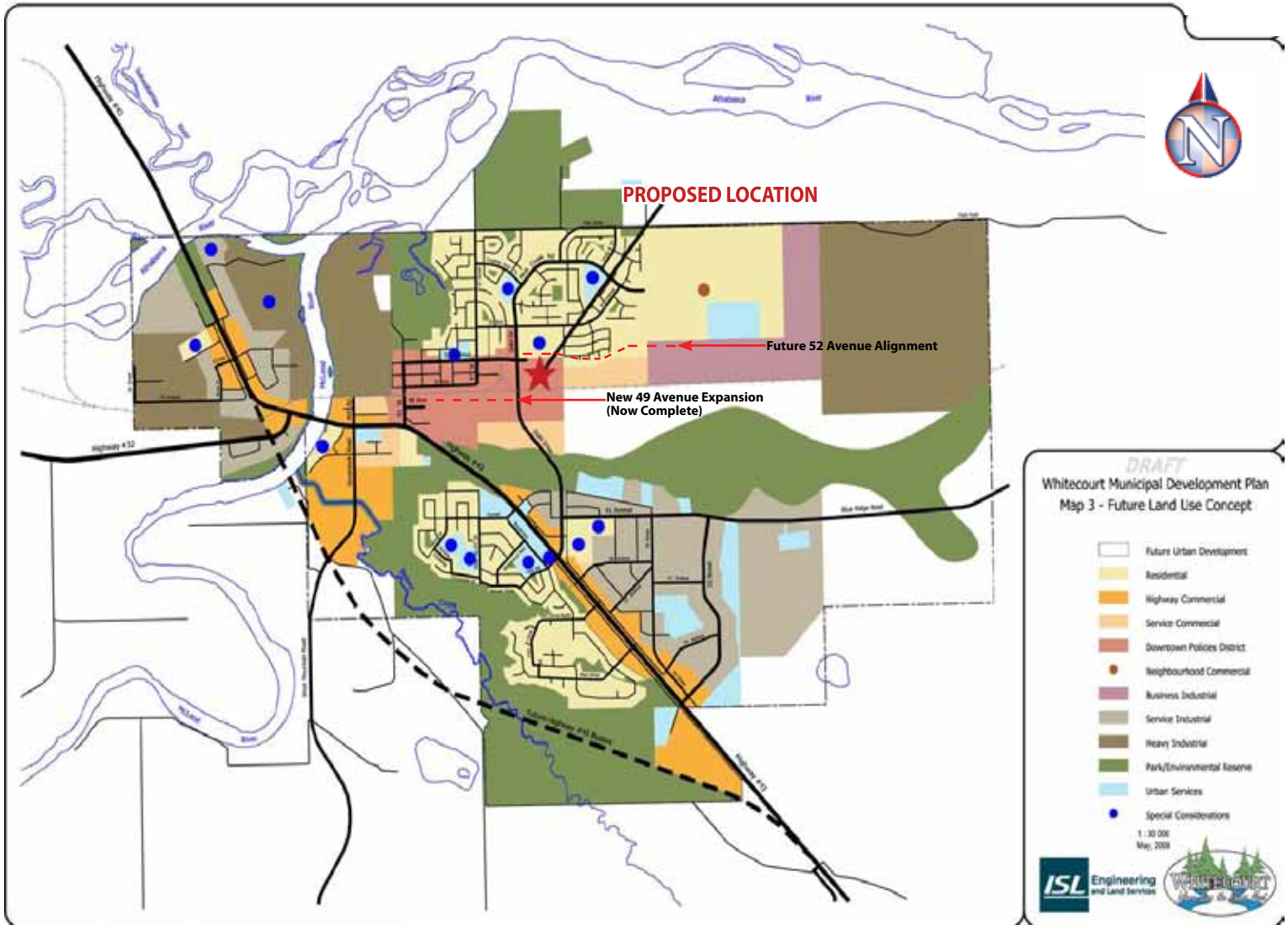
SE Corner of Dahl Drive & 52 Avenue  
Whitecourt, Alberta



# Whitecourt Power Centre

SE Corner of Dahl Drive & 52 Avenue  
Whitecourt, Alberta

## Future Land Use



Intelligent  
Real Estate Solutions

Across Canada & the USA  
For a list of offices, please visit us at: [www.avisonyoung.com](http://www.avisonyoung.com)

The information contained herein was obtained from sources deemed to be reliable and is believed to be true; it has not been verified and as such, cannot be warranted nor form any part of any future contract.  
Date of publication - October 3, 2012

**Avison Young**  
Suite 2800 Bell Tower, 10104 - 103 Avenue NW  
Edmonton, Alberta T5J 0H8

T 780.428.7850 F 780.424.5815  
E [gm.edmonton@avisonyoung.com](mailto:gm.edmonton@avisonyoung.com)  
[www.avisonyoung.com](http://www.avisonyoung.com)

Avison Young Real Estate Alberta Inc.