



## South Sudan – Juba Teaching Hospital Emergency Shipment of Medicines/Medical Supplies/Equipment

---



January 2014

Real Medicine Foundation  
11700 National Blvd, Suite 234  
Los Angeles, CA 90064  
(310) 820-4502

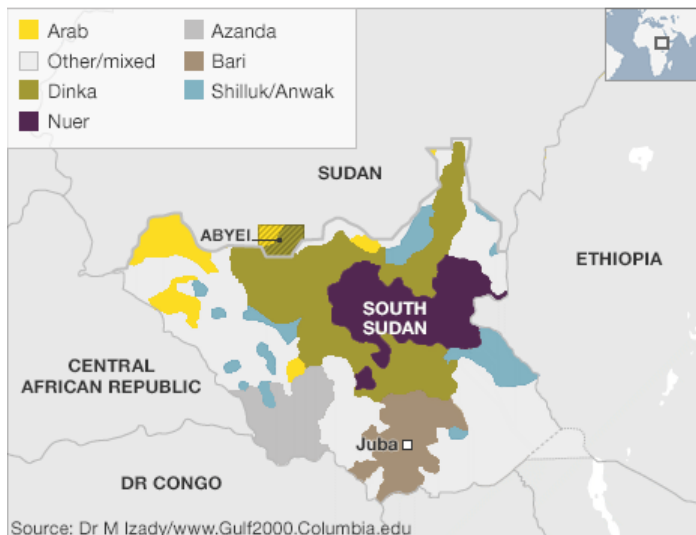
## EMERGENCY SHIPMENT OF MEDICINES/MEDICAL SUPPLIES/EQUIPMENT TO JUBA TEACHING HOSPITAL

### Background

#### Political Situation

South Sudan gained independence from Sudan on July 9<sup>th</sup>, 2011 as the outcome of a 2005 peace deal that ended Africa's longest-running civil war. An overwhelming majority of South Sudanese voted in a January 2011 referendum to secede and become Africa's newest country. Formed from the 10 southern-most states of Sudan, South Sudan is highly diverse ethnically and linguistically; the Dinka and Nuer, each with its own languages and traditional beliefs, are among the largest of more than 200 ethnic groups.

#### Distribution of ethnic groups



Long based on subsistence agriculture, South Sudan's economy is now highly oil-dependent. While an estimated 75% of all the former Sudan's oil reserves are in South Sudan, the refineries and the pipeline to the Red Sea are in Sudan. Under the 2005 accord, South Sudan received 50% of the former united Sudan's oil proceeds, which provide the vast bulk of the country's budget; this arrangement was set to expire with independence. In January 2012, the breakdown of talks on the sharing of oil revenues led South Sudan to halt oil production and halve public spending on all but salaries. A deal in March 2013 provided for Sudan to resume pumping South Sudanese oil in May, and created a demilitarized border zone. Despite the potential oil wealth, South Sudan is one of Africa's least developed countries.

Alongside the oil issue, several border disputes with Sudan continue to strain ties. The main row is over border region of Abyei, where a referendum for the residents to decide whether to join south or north has been delayed over voter eligibility. Another border conflict zone is the Nuba Mountains region of Sudan's South Kordofan state, where violence continues between the largely Christian and pro-SPLA Nuba people and northern government forces.

Inside South Sudan, a feud between rival ethnic groups in Jonglei state has left hundreds of people dead and some 100,000 displaced since independence. Several rebel forces opposed to the SPLM-dominated government have emerged, including the South Sudan Liberation Army (SSLA) and a force originally formed by a former SPLA general. In addition, tension within the SPLM over alleged Dinka domination of the government spilled over into a major conflict in **mid-December 2013**, sparking fears of civil war. Signs of friction within the governing SPLM party came in July when President Salva Kiir, an ethnic Dinka - the country's largest group, sacked his deputy Riek Machar, who is from the second largest community, the Nuer. What started as a political squabble has escalated into ethnic violence. President Kiir believes there was a coup initiated by Mr Machar. He denies the accusations, but has publicly criticized Mr Kiir for failing to tackle corruption and said in July 2013 that he would challenge him for the SPLM's leadership.

Since mid-December 2013, **more than 400,000 people** are said to have fled their homes, thousands have been wounded and killed, and there are reports of mass killings along ethnic lines.



## Juba Teaching Hospital (JTH)

Juba Teaching Hospital (JTH), a 580-bed facility and the only referral hospital in the whole country of South Sudan, is located in Juba City, Central Equatoria State. With an estimated population of 9.6million based on annual population growth of 3% from a population census conducted in 2008 and lack of proper functioning primary health care facilities upcountry, many South Sudanese have nowhere to go to but to this national referral hospital which has been overwhelmed even before the current conflict. Military and police hospitals, if any, are non-functional country wide, forcing soldiers and officers to share the limited facilities with civilians.

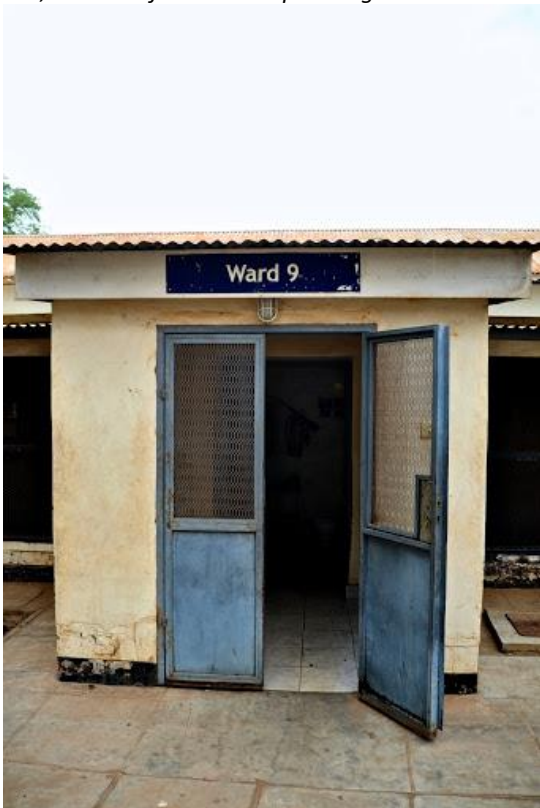
Juba Teaching Hospital is directly funded by the central government through the National Ministry of Health, and supported by Real Medicine Foundation, UN agencies and other NGOs. However, with support from UN agencies and NGOs, the hospital is still not well equipped and lacking basic medical supplies and equipment as well as human resources to deliver quality healthcare services to the people.



*Maternity Ward with Delivery suite, Midwifery duty station, ICU, and non-functional Operating theatre*



*Corridor where antenatal mothers are mixed with postnatal mothers due to lack of space*









Departments and services include: Pediatrics, Internal Medicine, Surgery, Obstetrics/Gynecology, Ophthalmology, Mental Health, Physiotherapy, Diagnostic Services: Laboratory, Radiology; Finance/Administration/Statistical Unit.

With the growing population of Juba City, currently estimated to be 372,141 based on the population census conducted in 2008, there is immense need to increase the bed capacity of the wards to handle the growing population and increase access to health services.

### **Medical Equipment and Maintenance**

Juba Teaching Hospital is directly funded by the central government through the National Ministry of Health. Medical supplies and maintenance are handled through the National Ministry of Health of South Sudan with supplements coming from United Nations agencies and NGOs. The supplies are irregular, forcing patients to buy most of the consumables and pharmaceuticals from private pharmacies. Due to the high level of poverty, most vulnerable patients are not able to afford modern medicine hence significantly increasing patient mortality in Juba.

RMF has worked in close cooperation with South Sudan's National Ministry of Health (MOH) and with Juba Teaching Hospital (JTH) for several years; the core objectives of these partnerships are stipulated in our Memorandum of Understanding (MOU) with both entities. In a Health Systems Strengthening project at Juba Teaching Hospital, RMF has started to upgrade infrastructure at JTH in spring of 2013, beginning with the wards of the Pediatric Department, as well as to support procurement of furniture, medical equipment, and supplies for the Pediatric Department. Milestones achieved include the full renovation of Pediatric Wards 5 and 7 (total bed capacity of 120 beds), development of guidelines and policies and provision of supplies for the maintenance of the renovated Pediatric Wards; recruitment of additional staff; removal and disposal of large amounts of regular and medical waste and design and initiation of a waste disposal management program; training of nursing staff in charge in various departments on the importance of infection control and waste segregation in the wards/outpatient departments; procurement of protective gears; facilitation of and regular monitoring and supportive supervision of the JTH healthcare workers on policy guidelines; support of high speed WIFI internet services for JTH Resource Centre providing internet access to doctors and nurses at the hospital; assessment for improving water and sanitation situation at JTH; pilot training program on Respectful Maternity Care.

South Sudan's new Minister of Health, H.E. Dr. Riek Gai Kok personally visited the newly renovated Pediatric Wards and acknowledged RMF's work for JTH. The renovation of the Pediatric Ward 5 has reduced re-infection rates among children on admission and also improved working conditions for healthcare professionals and JCONAM (Juba College of Nursing and Midwifery) students who are on their clinical rotations, and, above all, increased the quality of care patients receive and started to increase the number of patients coming for medical treatment.



*Front of the renovated Pediatric Ward 5*





*Maintenance at Pediatric Ward*



*Small patient recovering well from severe malaria in Pediatric Ward 5*







## December 2013

Based on RMF's partnership with JTH and the MOH, we were made aware of the desperate situation at Juba Teaching Hospital in mid-December 2013: It was inundated with patients, severely wounded and seriously ill, civilians and military personnel, and running desperately low on urgently needed medical supplies, medicines, and equipment to do its life-saving work at this time of crisis. Since many people arrived with severe wounds, there were urgent requests to donate blood. The Director General of JTH and many members of the Ministry of Health were supporting mainly South Sudanese physicians, nurses and other medical professionals at JTH in mid- to late December; international staff had left Juba because of security concerns. A committee chaired by the Undersecretary was overseeing all operations. In addition to patients, many others, especially women and children, were seeking shelter at JTH.

Even before this conflict, many patients had been dying for lack of basic resources and supplies. Among other poor health indicators, South Sudan has the highest maternal mortality ratio in the world with 2,054 maternal deaths per 100,000 live births. Some of the major reasons for the high levels of maternal mortality in South Sudan are women's lack of access to appropriate reproductive health care as a result of their social and economic status, poor health infrastructure, inadequate medical supplies, insufficient human resources in the existing health facilities and insecurity in several regions of the country especially tribal conflicts in some parts of the country.

## December 21, 2013

Because of the generous support of **Humanity United, Pam and Pierre Omidyar, and the Michael K. Wilson Trust**, RMF was able to initiate the procurement of critically needed supplies in Kampala to be shipped to Juba Teaching Hospital in the course of late December 2013/early January 2014.

The Director General of Juba Teaching Hospital, Dr. Wani Lolik Lado, provided a specific list of the most urgent needs for several departments, especially laboratory and radiology department, including tools to accept blood donations, and RMF's team added a detailed list of medical supplies, medicines, and equipment, based on our knowledge of medical operations and needs at JTH. At that time, RMF received reports that no support such as medical supplies/aid to Juba Teaching Hospital had been provided yet.

REPUBLIC OF SOUTH SUDAN  
MINISTRY OF HEALTH  
Juba Teaching Hospital



Date: 30<sup>th</sup> December 2013

X-ray immediate request.

No	Item	UOM	QTY
	X ray films		
1	18 X 24 cm	Pcs	500
2	35 X 43 cm	Pcs	1000
3	35 X 35 cm	Pcs	1000
4	30 X 30 cm	Pcs	1000
5	24 X 30 cm	pcs	1000
6	Developer Solution	rin	1
7	Fixer Solution	Gallon	1

Dr. Wani Lolik Tado  
Director General

CC: X-ray JTH



**Juba Teaching Hospital**

**Laboratory Department**

**List of Lab and Blood Bank Items for One Month**

**24<sup>th</sup> December 2013**

	Item Description	Monthly Consumption
1	Drabkin's Reagent	8 kits
2	Giemsa Stain solution	4 litres
3	Glucose Reagent	4 kits
4	ESR Set	8 packs
5	Anti- A (blood grouping reagent)	20 vials
6	Anti –B (blood grouping reagent)	20 vials
7	Anti –D (blood grouping reagent)	20 vials
8	Widal Antigen, S.typhi O	32 vails
9	Widal Antigen, S.typhi H	32 vails
10	Syphilis, 50 tests/box	30 boxes
11	Blood bags 450 ml	600 pcs
12	Blood bags 250 ml	300 pcs
13	Blood transfusion sets	800 pcs
14	Yellow tips, 1000 pcs/bag	15 bags
15	Urine Dipstick, 11 parameters	15 bottles
16	H.Pylori RDTs, 50 tests/box	15 boxes
17	HBsAg RDTs	30 boxes
18	HCV RDTs, 50 tests/box	30 boxes
19	HCG Test Strips	10 boxes
20	Plain Tubes, 100 pcs/pack	50 packs
21	EDTA Tubes, 100 pcs/pack	50 packs
22	Hemocue Hb microcuvettes, 50 pcs/bottle	25 boxes





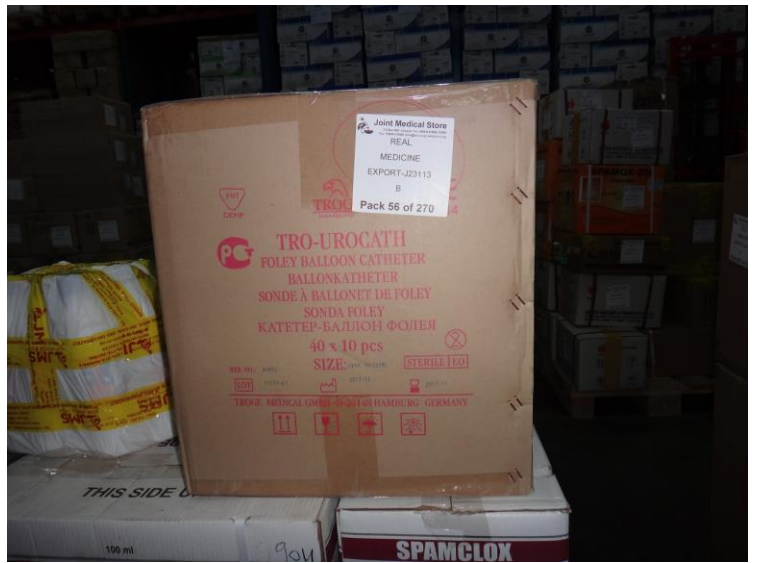
## Procurement in Kampala















### **December 30, 2013**

Joint Medical Store in Kampala ([www.jms.co.ug](http://www.jms.co.ug)) where RMF Uganda usually buys medical supplies/medicines/equipment since they have large quantities and good standard and quality at reasonable prices was officially closed from December 27 - January 6. Ben Asimwe, JMS Head of Sales & Marketing, made a major exception possible and JMS opened the store for us during their official holidays. JMS worked with RMF's Uganda and South Sudan team all of Tuesday, Dec 31, in Kampala, and fine-tuned the needs list together, taking into account the JTH DG's requests and also restrictions on certain medications to be allowed into South Sudan.

Different options for transport were taken into consideration since a plane was generously offered by Shannon Sedgwick Davis and her team at Bridgeway Foundation:

1. Flight from Entebbe into Juba (flight permits were being requested and prepared).
2. Transport via road across the Uganda/South Sudan border.

RMF's South Sudan team in Juba and Nimule continued preparing parallel for the arrival of the shipment in Juba, custom clearances, tax exemption from the MOH, transport from Juba airport to Juba Teaching Hospital, and the storage and distribution of the goods at JTH.

### **January 2, 2014**

On early Thursday morning the supply list was finalized (JMS opened the store again just for RMF's team) and JMS supported RMF's team in procuring additional supplies and equipment (i.e. oxygen concentrators) that they didn't have in stock themselves. JMS staff then started packing the items for transport.

A total of 856 boxes of medicines, medical supplies and equipment were packed, more than 13,000 pounds in urgently needed supplies for Juba Teaching Hospital.

Since the plane that was generously made available could only carry 1,100 pounds we had to evaluate if it would make sense to fly several times, but then decided to shift to transport solely by road. In order to import the supplies into South Sudan, a tax exemption certificate is needed and it would have been too complicated to break down the lists for several transports, get several flight permits/tax exemption letters, while in the meantime the situation at JTH kept getting more desperate. Ugandan transport companies were not willing to cross the border to South Sudan at this point in time. A South Sudanese friend of RMF's team, a laboratory technologist who works for Juba Teaching Hospital and is

the Managing Director for 'Medicare company' dealing with supplies of laboratory equipment, pharmaceuticals and transportation of medical goods, offered to transport the goods from Kampala to Juba.

In the meantime, renewed fighting was reported in Juba, and we had to make decisions on how to handle security best. Our team advised that it would not be wise to draw too much attention to the transport, but to try to keep everything 'as normal as possible'. JTH and the MOH then stepped forward, offering to send representatives to the Uganda/South Sudan border to accept our team and the shipment, to provide the tax exemption certificate from the MOH, and then drive together in a convoy to JTH. The Undersecretary personally signed the tax exemption letter. He had just come back from Bor and Malakal and reported how desperate the hospitals there were as well.

#### **Week January 6, 2014**

RMF's Country Director, Uganda, Naku Charles Lwanga, and Team Leader Healthcare Projects, South Sudan, Dr Taban Martin Vitale, together with a team of JMS staff completed loading the supplies on the truck in the course of the afternoon of January 6. The transport left in the early evening from Kampala to the Uganda/South Sudan border.

#### **Leaving Kampala – On route and at the Uganda/South Sudan border**



*At the Uganda border*





Custom officials at the Ugandan side of the border verifying RMF documents



Mechanical problem.  
On the left: Managing Director of Medicare Company

### On route from the Uganda/South Sudan border to Juba Teaching Hospital



### Juba Town – Customs







### January 10, 2014 – Arrival at Juba Teaching Hospital – Unloading the supplies and preparing for distribution

RMF's team, Dr Gismalla, the JTH/MOH team that met everyone at Juba customs, and the truck team arrived with the truck at Juba Teaching Hospital on Friday, January 10, and at least 50 JTH staff members from all departments were waiting for them! In addition, many, many patients. The mood was jubilant. JTH had been working so hard without supplies they desperately needed. They had received some donations of maybe 30 boxes of supplies, but never before what they really needed and on this scale (856 boxes, more than 13,000 pounds of supplies).

JTH was seriously lacking blood, and because of our shipment, they were now finally able to do urgently needed blood transfusions, and they already initiated *a major blood drive for the next day, Saturday, January 11!* With our shipment, we provided:

- 1,000 blood giving sets
- 1,500 blood bags (1,000 @ 450ml; 500 @ 250ml), and also
- Blood grouping reagents: Anti A Serum, Anti B Serum, and Anti D Serum.

We also provided: IV sets, drip stands, IV cannulae, syringes, etc.

And the radiology department was there to wait for the truck also: We brought 3,500 X-ray films for them in different sizes, and X-ray developer and fixer. And this is just a small portion of the total shipment.







*Senior Medical Officer (SMO) of JTH welcoming RMF team and greeting Dr Taban Martin Vitale*



*Director General, JTH in white coat*



*The big moment: Opening the truck at JTH*



*JTH pharmacist Dr. Gismalla, RMF's Richard Ambayo, Dr Taban Martin Vitale, Okang Wilson Ezekiel, JTH DG Dr Wani Lolik Lado*



*Managing Director at Medicare Company and Lab Technician at JTH*





*Items that needed cold chain transport – preserved through the entire journey*



*Mr Charles, Head of Laboratory Department for JTH (front) and his Colleague: They came immediately to collect the blood bags so they could proceed with their planned blood donation campaign*



*The blood bags*





*The JTH DG directing how to arrange supplies in storage for distribution*









**January 11, 2014**

On the morning of January 11, RMF's team met with the JTH DG and JTH department heads and staff and MOH representatives, to go through all boxes and supplies and organize distribution together. Everyone was joyful and excited.

Distribution started immediately for the laboratory and radiology departments. Items were also given out right away for specific departments' emergency and crisis needs. Dr Gismalla, who had joined RMF's team in Nimule, continued to be an intricate part of the distribution.

A blood drive at JTH was initiated by the Indian community. More than 90 persons (including all RMF team members) donated blood! Extensive MOH verification of items supplied will happen on Monday, January 13.

#### **Blood Drive at Juba Teaching Hospital on January 11, 2014**







**January 13, 2014**

More than 50 X-ray films are being used per day; lots of consumables are being used for wound care and wound cleaning; many, many patients have already been treated with the supplies we brought on January 10. There was a profound deficiency in supplies; JTH is running through the ones we brought quickly.

**ON BEHALF OF THE PATIENTS AT JUBA TEACHING HOSPITAL,  
THANK YOU FOR MAKING THIS POSSIBLE!!**



# Accounting Documentation

Invoice No. 345

Dated: 3-Jan-2014

Astra Pharma (U) Ltd  
Plot 8, Wilson Lane  
P.O. Box 7840  
Phone : 4345373 Fax :4349858  
Kampala  
TIN : 1000024210  
WITHHOLDING TAX EXEMTED.

CASH SALE

Party : R M F

Description of Goods	Batch	Quantity	Rate	per	Amount
Blood Giving Set	KBA01	1,000	1400	pcs	1,400,000
Artemeter / Lumefantrine 20/120mg TAB	KBA01	3,410	1500	pcs	5,115,000
Artemeter / Lumefantrine 180/1080mg Suspension 60ml	KBA01	1,380	11000	pcs	15,180,000
Total:					Ug.21,695,000

**ASTRA PHARMA (U) LTD**  
**PAID**

Amount Chargeable (in words)

E. 8

Shilling Twenty One Million Six Hundred Ninety Five Thousand Only

Declaration

for Astra Pharma (U) Ltd

Goods once sold are not Returnable.  
Please ensure that goods are as per  
Invoice. Short receipt of claims will  
not be entertained once you leave  
counter.

Authorised Signatory

This is a Computer Generated Invoice





## Rima (E.A) Limited

One-Stop Center for Medical Equipment and Diagnostics

Plot 18B Buganda Road, P.O. Box 38482, Kampala, Uganda

Tel: +256-(0) 392 960 266, 0414-346475 E-mail: rima\_ea@gmail.com

TIN: 1000264442

No.	896	RECEIPT	Date	3 <sup>rd</sup> JAN 2014
-----	-----	---------	------	--------------------------

RECEIVED with thanks from REAL MEDICINE FOUNDATION (R.M.F.)

The sum of shillings SEVENTEEN MILLION SIX HUNDRED SEVENTY NINE THOUSAND ONLY.

Being payment of OXYGEN CONCENTRATORS + LAB DIAGNOSTICS TOOLS

Cash / Cheque No. Balance

UShs. 17,679,000 =

WITH THANKS

Signature *N. K. K.*

For: Rima (E.A) Limited





No. 2017

TIN: 1000264442

### DELIVERY NOTE

Date: 3<sup>rd</sup> JAN 2016

M/S REAL MEDICINE FOUNDATION (R.M.F.) Date: \_\_\_\_\_

[illegible]

Received the above goods in good order and condition

Delivered by: Nakinhu - L

Received by: D. TABAN MARTIN VITALE

And H





# Rima (E.A) Limited

One-Stop Center for Medical Equipment and Diagnostics

Plot 18B Buganda Road, P.O Box 36482, Kampala, Uganda  
Tel: +256-(0) 392 960 266, 0414-346475 E-mail: rima\_ea@gmail.com

TIN: 1000264442

M/S REAL MEDICINE  
FOUNDATION (R.M.F).

INVOICE	
No.	<u>2004</u>
Delivery No	<u>2017</u>
Date	<u>31. JAN 2014</u>
LPO NO	

QTY.	SIZE	DESCRIPTION	COST PRICE	AMOUNT
03	PCS	OXYGEN CONCENTRATORS	4,515,000	13,545,000
03	SET	ERS SET (STAND + ESR TUBES)	78,000	234,000
30	BOX	TPHA, 50 TESTS / BOX	81,000	2,430,000
15	BOX	H PYLORI TEST STRIPES	98,000	1,470,000
		SEVENTEEN MILLION, SIX HUNDRED SEVENTY NINE THOUSANDS		
		17,679,000		
E.&O.E			TOTAL	17,679,000

Accounts are due on demand.

Signature: Nagendu





Plot 1828 Gogonya Road Nsambya

P.O BOX 4501 Kampala

Tel: 0414 510 096/0775 361 406

Email:sales@jms.co.ug

**TAX INVOICE NUMBER: J23113M**

DATE: 3<sup>rd</sup> January 2013

CUSTOMER: REAL MEDICINE FOUNDATION UGANDA

P.O BOX 769 Tororo Uganda

ATTN: Mr.Naku Charles Lwanga

Tel: 0783 180 655

Line No	Item Code	Description	Pack Size	Qty	Unit Price	Amount
1	EQPWARD002	SUCTION PUMP, HAND/FOOT-OPERATED, TWIN AMBU	BP1	3	471,910	1,415,730
2	SPAWDEQ012	NEBULISER CHAMBER, SUNRISE	BP1	5	10,496	52,482
4	SPAWDEQ008	OXYGEN MASK, ADULT, SUNRISE	BP1	5	8,463	42,315
5	EQPENTE003	LARYNGOSCOPE SET, MACINTOSH 5 BLADES, GOWLANDS	PC1	1	383,423	383,423
6	EQPBAP006	B.P MACHINE, DIGITAL	BP1	5	282,906	1,414,529
9	SUNMISC049	THERMOMETER ELECTRONIC	PC1	20	8,047	189,904
10	EQPSCAL009	WEIGHING SCALE, MEDICAL, 150KG SECA762	BP1	3	249,052	747,157
11	EQPSCAL001	WEIGHING SCALE, INFANTS HANGING TYPE, MAX. 25KG	BP1	3	166,083	587,926
12	HOSFURN010	DRIP STAND, S/S, ON CASTORS	BP1	10	132,172	1,321,716
13	HOSFURN006	TROLLEY MULTIPURPOSE	BP1	6	641,286	4,540,305
14	HOSFURN013	STRETCHER, PORTABLE, WASHABLE TOUGH MATERIAL	BP1	5	328,966	1,644,830
15	HOSFURN011	WHEEL CHAIR	BP1	2	408,980	817,961
16	SUNORES024	ADHESIVE TAPE 2.5CM X 5M	BP12	70	24,276	2,005,198
17	SUNADMI007	IV CANULA G16 WITH PORT	BP100	10	61,644	616,444
18	SUNADMI008	IV CANULA G18 WITH PORT	BP100	20	60,804	1,216,086
19	SUNADMI009	IV CANULA G20 WITH PORT	BP100	30	63,815	1,854,440
20	SUNADMI010	IV CANULA G22 WITH PORT	BP100	30	63,512	1,905,352



21	SUNADM012	IV CANULA G24 WITH PORT	BP100	30	66,575	1,997,251
22	SUNADM013	IV GIVING SET DISPOSABLE	PKPC25	200	13,848	2,769,668
23	SUNDRES008	ELASTIC BANDAGE 7.5CM X 4.5M	PC1	1,000	896	896,000
24	SUNDRES016	PLASTER OF PARIS 10CM	PC1	500	1,743	871,550
25	SUNBLAD006	SURGICAL BLADES NO15	BP100	10	13,219	132,190
26	SUNBLAD008	SURGICAL BLADES NO21	BP100	10	13,014	130,140
27	PPGCLOT005C	THEATRE CAPS DISPOSABLE	PKPC100	5	14,568	72,842
28	PPGCLOT003R1	THEATRE BOOTS	BPR1	10	55,199	551,987
29	SUNTUBE011	CATHETER FOLEY CH10 BALLOON	BP10	1	20,918	20,918
30	SUNTUBE012	CATHETER FOLEY CH12 BALLOON	BP10	2	16,027	32,055
31	SUNTUBE013	CATHETER FOLEY CH14 BALLOON	BP10	5	15,569	77,843
32	SUNTUBE014	CATHETER FOLEY CH16 BALLOON	BP10	40	15,992	639,666
33	SUNTUBE015	CATHETER FOLEY CH18 BALLOON	BP10	10	15,971	159,711
35	SUNDRES005	COTTON WOOL 500G - HOSPITAL QUALITY	PC1	300	8,568	2,570,400
36	SUNDRES006	COTTON WOOL 200G - HOSPITAL QUALITY	PC1	300	3,451	1,035,303
37	SUNDRES014	GAUZE HYDROPHYLIC BP 90CM X 91M	PC1	200	46,946	9,389,212
39	PPGGLOV005	GLOVES NON-STERILE MEDIUM DISPOSABLE	BP100	400	12,867	5,146,736
40	PPGGLOV004	GLOVES NON-STERILE LARGE DISPOSABLE	BP100	400	13,951	5,580,492
41	PPGGLOV011	GLOVES SURGICAL STERILE 7.5	BPRS0	150	39,779	5,966,826
42	PPGGLOV012	GLOVES SURGICAL STERILE 8	BPRS0	150	41,283	6,192,461
43	PPGCLOT010C	THEATRE MASK DISPOSABLE	BPS0	50	6,013	300,642
45	SUNUGA037	SUTURE, VICRYL, (2) 75CM THREAD, 45MM NEEDLE 1/2 RO	BP12	10	103,714	1,037,141
46	SUNUGA023	NYLON (1) 6150RC, 100CM THREAD LENGTH	BP12	30	23,646	709,374
47	SUNUGA026	NYLON (2) 62290CC, 100CM THREAD LENGTH	BP12	25	25,877	646,919
48	SUNUGA017	SILK (1) 5134TF, 75CM THREAD LENGTH	BP12	20	23,223	464,466
49	SUNADM032	SYRINGE AUTO DISABLE 10ML WITH NEEDLE DISPOSABLE	BPS0	40	12,328	493,306
50	SUNADM031	SYRINGE AUTO DISABLE 5ML WITH NEEDLE DISPOSABLE	BP100	150	14,707	2,206,022
51	SUNADM029	SYRINGE AUTO DISABLE 2ML WITH NEEDLE DISPOSABLE	BP100	50	11,846	592,279
52	SUNADM006	INSULIN/IMMUNISATION SYRINGE 100IU WITH NDLE G29	BP100	5	30,069	150,344
53	SUNADM002	BLOOD COLLECTING BAG 250ML	PKPC10	50	40,954	2,047,693
54	SUNADM003	BLOOD COLLECTING BAG 450ML	PKPC10	100	34,704	3,470,395
55	LABHAEM012R1	MALARIA TEST STRIPS	BTS25	40	62,602	2,954,821
56	LABSER008	HIV DETERMINE 1/II 100 TESTS	PC1	5	301,767	1,508,837
57	LABSER006	HBS AG DIPSTICK 50' (2X25 TESTS)	PC1	10	57,045	673,132
58	LABSER011	PREGNANCY (HCG) TEST DIP STRIP	BTS25	20	19,741	394,810
59	LABCHE010	GLUCOSE TEST STRIPS (ONE TOUCH) SELECT	BTS50	5	89,250	526,575
60	SUNRAD016C	ULTRASOUND GEL 250G	BP1	50	6,426	321,300



61	MEDANES007	LIGNOCAINE 2% 20ML VIAL	BV1	250	1,428	356,895
63	MEDANAL003	PARACETAMOL 120MG/5ML SYRUP 100ML	BB1	1,000	1,023	1,023,400
64	MEDANAL005	PARACETAMOL 500MG TAB	BT100	500	1,523	761,495
65	MEDNSAI002	DICLOFENAC 50MG TAB	BT100	500	1,733	866,650
66	MEDNSAI001	DICLOFENAC 25MG/ML 3 ML AMP	BA100	8	15,474	123,792
67	MEDOPID008	TRAMADOL 50 MG CAPS	BT100	3	16,560	49,679
70	MEDANTD002	ADRENALINE 1MG/ML 1ML AMP	BA10	50	16,359	817,937
71	MEDHIST003	CHLORPHENIRAMINE 4MG TAB	BT100	100	1,543	154,313
72	MEDHIST002	CETIRIZINE 10MG TAB	BT100	100	3,000	299,995
74	MEDANTD004	ATROPINE 1MG/ML 1ML AMP	BA100	3	21,420	64,260
75	MEDCONV001	CARBAMAZEPINE 200 MG TAB	BT100	3	4,522	13,566
76	MEDAHLM001	ALBENDAZOLE 400MG TAB	BO1	1,000	381	300,960
77	MEDBACT001	AMOXICILLIN 125MG/5ML POWD. SUSP. 100ML	BB1	1,000	1,531	1,531,050
78	MEDBACT010	AMPCLOX SUSPENSION 100ML	BB1	1,000	2,252	2,251,870
79	MEDBACT031	COTRIMOXAZOLE 200+40MG/5ML SUSP. 100ML	BB1	1,000	1,047	1,047,100
80	MEDBACT035	ERYTHROMYCIN 125MG/5ML SUSP. 100ML	BB1	1,000	1,938	1,937,550
81	MEDPROT004	METRONIDAZOLE 200MG/5ML SUSP. 100ML	BT11	1,000	866	865,690
82	MEDBACT002	AMOXICILLIN 250MG CAPS	BC100	500	5,484	2,741,800
83	MEDBACT020	CHLORAMPHENICOL 250MG CAPS	BC100	250	7,504	1,876,015
84	MEDBACT009	AMPICILLIN/CLOXACILLIN 500MG CAPS	BC100	500	10,889	5,444,570
85	MEDBACT032	COTRIMOXAZOLE 400/80MG TAB	BT100	500	3,801	1,900,345
86	MEDBACT034	DOXYCYCLINE 100MG CAP	BC100	500	3,796	1,898,070
87	MEDBACT036	ERYTHROMYCIN 250MG TAB	BT100	500	9,156	4,578,015
90	MEDBACT026	CIPROFLOXACINE 250MG TAB	BT100	100	4,332	433,195
92	MEDBACT029	CLOXACILLIN 250MG CAPS	BC100	400	6,350	2,539,856
93	MEDBACT011	AZITHROMYCIN 500MG TAB	BT30	25	26,563	664,070
94	MEDPROT002	METRONIDAZOLE 200MG TAB	BT100	500	1,623	811,430
95	MEDBACT054E	BENZYL PENICILLIN 1 MIU VIAL	BV50	4	10,207	40,827
96	MEDBACT043	PROCAINE PENICILLIN FORTIFIED 4 MIU VIAL	BV50	5	30,935	154,675
97	MEDPROT001	METRONIDAZOLE 5MG/ML 100ML IV	BT11	1,000	846	845,710
98	MEDBACT017	CEFTRIAXONE 1G VIAL	BV1	5,000	1,669	8,346,100
99	MEDBACT038	GENTAMICIN 40MG/ML 2ML AMP	BA100	100	15,333	1,533,292
100	MEDBACT025	CIPROFLOXACIN 200MG/100ML IV	BB1	1,000	915	914,730
101	MEDFUNG002	CLOTRIMAZOLE 1% CREAM 20G	BTU1	1,000	726	725,960
102	MEDFUNG004	CLOTRIMAZOLE 100MG PESSARIES	BP6	300	774	232,050
104	MEDFUNG008	FLUCONAZOLE 200MG	BT20	150	6,841	1,026,216
105	MEDFUNG015	NYSTATIN 500,000 IU/5ML SUSP./DROPS	BB1	750	1,904	1,428,000

106	MEDMALA017	QUININE 300MG TAB	BT100	100	14,478	1,447,843
107	MEDMALA016	QUININE 100MG/5ML SYRUP 100ML	BB1	4,000	2,025	8,098,200
108	MEDMALA022	ARTESUNATE /AMODIAQUINE 50/135MG 3 X 25 TABS	PC1	150	29,052	4,357,808
109	MEDMALA007	ARTEMETHER/LUMEFANTRINE 20/120MG TAB	BT24	6,590	1,468	9,675,109
111	MEDMALA005	ARTEMETHER/LUMEFANTRINE 20/120MG (6 X 2)TAB	PC1	600	869	521,526
112	MEDMALA003	ARTEMETHER/LUMEFANTRINE 180/1080MG SUSPENSION 60ML	BB1	1,620	10,864	17,600,085
113	MEDMALA002	ARTEMETHER 80MG/ML 1ML AMP	BA5	1,000	10,554	10,553,620
114	MEDHYPE006	HYDRALAZINE 20MG AMP	BA5	20	36,894	737,884
116	MEDDIUR003	FRUSEMIDE 40MG TAB	BT100	40	2,362	94,486
117	MEDCARD004	DIGOXIN 0.25MG TAB	JT100	1	6,902	6,902
118	MEDHYPE011	NIFEDIPINE RETARD 20MG TAB	BT100	50	2,846	142,288
119	MEDTOPID03C	CALAMINE LOTION 100ML	BTU1	100	4,760	561,680
120	CLEANTID05	HYDROGEN PEROXIDE 6% 250/200ML	BTL1	400	833	333,200
121	CLEANTID07	POVIDONE IODINE 10% SOLUTION 100ML	BTL1	250	2,527	631,815
122	CLEDISID06	SODIUM HYPOCHLORITE SOLUTION 0.75LTR	BTL1	100	3,761	443,840
123	CLEANTID03	CHLOROXYLENOL (DETTOL) 500ML	BTL1	50	15,090	890,295
124	MEDGITD014	MAGNESIUM TRISILICATE 250/125MG TAB	JT1000	40	10,366	414,620
125	MEDFLEC006	ORAL REHYDRATION SALT (ORS)	BSC25	100	4,284	428,400
126	MEDGITD005	LOPERAMIDE 2MG CAPS	BC100	100	3,035	303,450
130	MEDDIAB001	GIBENCLOMIDE 5MG TAB	BT100	50	1,852	92,582
131	MEDDIAB005	INSULIN SOLUBLE 100U/ML 10ML VIAL	BV1	100	11,381	1,138,112
132	MEDDIAB006	METFORMIN 500MG TAB	BT100	100	5,950	595,000
133	MEDBACT021	CHLORAMPHENICOL 0.5% EYE DROPS 10ML	BP1	300	512	153,510
135	MEDBACT046	TETRACYCLINE EYE OINTMENT 3% 3.5G	BTU1	300	1,071	321,300
136	MEDOBGY009	OXYTOCIN 10 IU/ML 1ML AMP	BA100	50	48,087	2,404,371
137	MEDOBGY008	METHYLERGOMETRINE 0.2MG/ML 1ML AMP	BA100	50	23,708	1,185,419
139	MEDPSYC006	CHLORPROMAZINE 25MG TAB	BT100	10	3,689	36,890
142	MEDBRON002	SALBUTAMOL INHALER 200 DOSES	BP1	100	5,783	578,340
143	MEDBRON007	AMINOPHYLLINE 25MG/ML 10ML AMP	BA50	2	18,743	37,485
144	MEDBRON005	SALBUTAMOL 4MG TAB	BT100	50	3,074	153,679
146	MEDFLEC001	DARROWS HALF STRENGTH 500ML	BB1	500	1,131	565,250
147	MEDFLEC004	DEXTROSE 50% IV 100ML	BB1	250	1,784	446,035
148	MEDFLEC008	SODIUM CHLORIDE 0.9% IV 500ML	BB1	5,000	1,131	5,652,500
149	MEDFLEC010	SODIUM LACTATE COMPOUND IV 500ML	BB1	1,000	1,131	1,130,500
150	MEDFLEC003	DEXTROSE 5% IV 500ML	BB1	2,000	1,135	2,269,040
151	MEDVITM003	FERRUS SULPHATE 200MG TAB	BT100	100	2,993	299,293
152	MEDVITM019	FOLIC ACID 5MG TAB	JT1000	10	5,729	57,294



153	MEDELEC011	WATER FOR INJECTION 10ML VIAL	BV50	200	3,570	714,000
154	MEDVITM007	MULTIVITAMIN TAB	BT100	1	2,238	2,238
155	MEDVITM006	MULTIVITAMIN SYRUP 100ML	BT11	500	1,761	880,500
157	SUNRADIO02	X-RAY FILM 18 X 24CM	BP100	5	106,433	532,166
158	SUNRADIO07	X-RAY FILM 43 X 35CM	BP100	10	367,936	3,679,356
159	SUNRADIO06	X-RAY FILM 35 X 35CM	BP100	10	288,756	2,887,557
160	SUNRADIO04	X-RAY FILM 24 X 30CM	BP100	10	170,362	1,703,624
161	SUNRADIO01	X-RAY DEVELOPER 2KG	PC1	1	60,692	60,692
162	SUNRADIO13	X-RAY FIXER 2.5KG	BP1	1	58,081	58,081
163	LABHAEM017	DRABKIN CAPSULES 6 CAPSULES PER VIAL	PKPC2	1	84,717	84,717
165	LABHAEM001	ANTI A SERUM 10ML	BT11	30	11,064	331,924
166	LABHAEM002	ANTI B SERUM 10ML	BT11	30	10,472	314,158
167	LABHAEM004	ANTI D SERUM 10ML	BT11	30	23,783	713,500
168	LABMICR016	SALMONELLA ANTIGEN (O) 5ML	PC1	32	11,228	423,953
169	LABMICR015	SALMONELLA ANTIGEN (H) 5ML	PC1	32	10,706	404,246
172	LABEQU026	PIPETTE TIPS, YELLOW, HECHT	PKPC1000	15	25,041	375,609
173	LABMICR023	URINE TEST STRIPS 9 & 10 PARAMETERS	BTS100	1	21,557	21,437
174	LABGENE109	VACUTAINER TUBE PLAIN 4ML	BP100	50	36,885	1,844,233
175	LABGENE110	VACUTAINER TUBE WITH EDTA 4ML	BP100	50	39,472	1,973,597
176	LABEQU030	CUVETTES FOR HAEMOGLOBIN METER (4 X 50)	BP200	10	496,930	4,969,300
177	EQPWARD005	PULSE-OXIMETER, HAND-HELD, MODEL 3901, BCI	BP1	5	1,104,122	5,520,612
		<b>Total</b>				<b>235,947,055</b>

Prepared by: Ben Asimwe

Head of Sales & Marketing



Received By: