

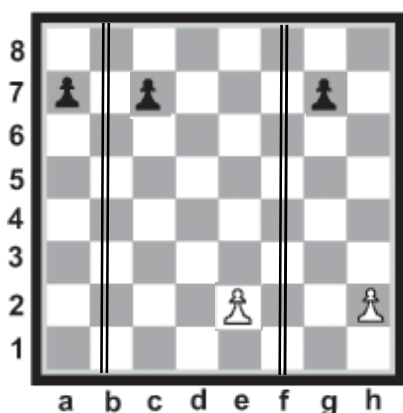
# Instructional Chess at St. Michael's School

**Championship Chess** presents a systematic, fun way to build chess skills during chess instruction and while students play. Studies show that chess improves math, reading and problem-solving and our methods connect these academic benefits to our classes. Classes include instruction as well as chess play and guided analysis.

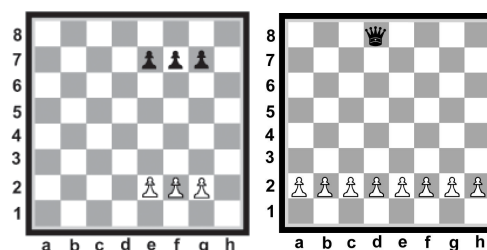
- ❖ **Day and Time:** Wednesday after school from **2:40 pm to 3:40 pm**
- ❖ **Dates:** Fall session starts **September 24<sup>th</sup>**, ending **November 19<sup>th</sup>** (9 sessions)
- ❖ **Who can play:** Session is open to all students, both beginners and experienced, in Kindergarten through 5<sup>th</sup> grade. **Note:** For the class to meet, we need at least 10 players **registered by email or phone, no later than September 19<sup>th</sup>.**
- ❖ **Cost:** Fall Session **\$109.00** including an instructional workbook or DVD.
- ❖ **Payment Deadline:** Due by **September 19<sup>th</sup>** or a \$10 late fee will be added.
- ❖ **Registration/Payment:** Please clip and send in the registration form below with your check payable to: **Championship Chess of Greater Richmond** and mail to 13406 Mitford Drive, Midlothian, VA 23114 or pay online at [www.championshipchessRVA.net](http://www.championshipchessRVA.net) under the Register tab via paypal. We will confirm your payment and registration by email.

## Championship Chess Staff and Methods

Championship Chess Instructors utilize a complete curriculum teaching early learners how each piece moves and introducing chess skills to beginners incrementally and improving players' skills and strategies in the opening, middle and endgame. Each player will receive an instructional booklet or chess DVD for their appropriate level of play.



*Beginners* use *Chess Basics* to learn how to play and win "pre-chess" games, starting with Pawns in the 3 basic positions—"head-to-head," separated and adjacent. Students use the algebraic grid to build spatial concepts.



Then, we continue to add Pawns and other pieces to develop a real understanding of how the pieces work and their most effective strategies.

## UPCOMING CHESS EVENTS:

- **Bon Air Chess Club** - free, all ages. 7:00–9:30 pm, 1st & 3rd Friday every month. Prizes. 10660 Duryea Drive
- **Contact Information:** Brian Garbera, 804-921-2410; [CoachBrian@ChampionshipChessRVA.net](mailto:CoachBrian@ChampionshipChessRVA.net)
- **Upcoming Scholastic Tournaments** <http://www.vschess.org/>

## Chess Enrollment for Fall 2014 at St. Michael's School

Child's Name: \_\_\_\_\_ Gr: \_\_\_\_\_ Teacher: \_\_\_\_\_

Parent/Guardian Name: \_\_\_\_\_

Home Phone: \_\_\_\_\_ Cell #: \_\_\_\_\_ e-mail: \_\_\_\_\_

\_\_\_\_\_ \$109 for all 9 classes including instructional materials

\_\_\_\_\_ \$10 late fee after September 19<sup>th</sup> deadline

Pay by **check** to **Championship Chess of Greater Richmond**. Write "St. Michael" at the bottom of the check and MAIL to: 13406 Mitford Drive, Midlothian, VA 23114, Attn: Brian Garbera or pay online at [www.championshipchessRVA.net](http://www.championshipchessRVA.net) under the Register tab via paypal.

