

Environmental Stewardship Concepts: Technical Advisor to the Community Around NuHart



Peter deFur and Laura Williams
Environmental Stewardship Concepts, LLC
July 27, 2015

Involving the Community



<http://www.epa.gov/superfund/community/>

NuHart Superfund Site



Neighbors Allied for Good Growth
applies for Technical Assistance
Grant



Technical Advisor Hired:
Environmental Stewardship
Concepts, LLC



The Technical Advisor helps the
community understand the technical
reports and the cleanup process, and
provides comments to the State on
behalf of the community

Work with Different Communities



Portland Harbor

Duwamish Tribe: Seattle, Washington

Vapor Intrusion

CERCLA

NPDES

Carbon Dioxide

In situ/Ex situ

Reagents

Sparging

POTENTIOMETRIC

HHRA

MAP

Bioremediation

EPA

DIOXINS/FURANS

Confined
Disposal
Facility

Hydraulic
Dredging

ARSENIC

Institutional

ERA

Controls

Polychlorinated

Record of Decision

Biphenyls

Redeployable
polymer
blanket

Remedial

bioaccumulation
biomagnification

Petroleum
Hydrocarbons

Investigation

COCs

PHYTOREMEDIATION

Translation of Information

- Visuals: Graphs, charts, tables



More Cleanup The EPA Plan Is Fine/No Change Less Cleanup

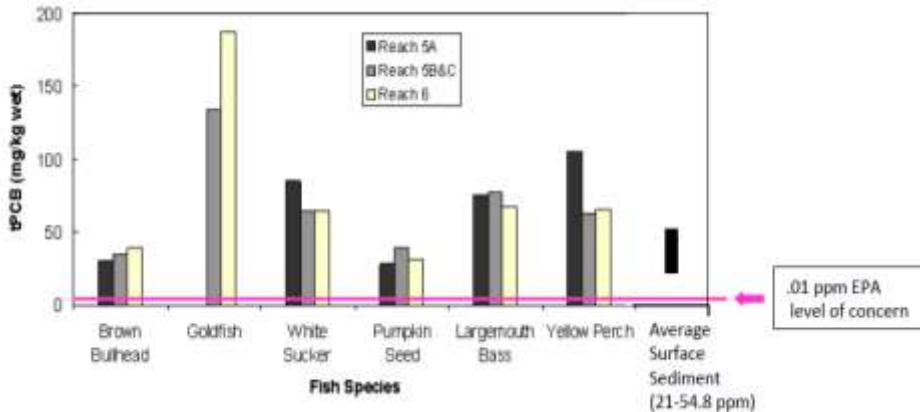
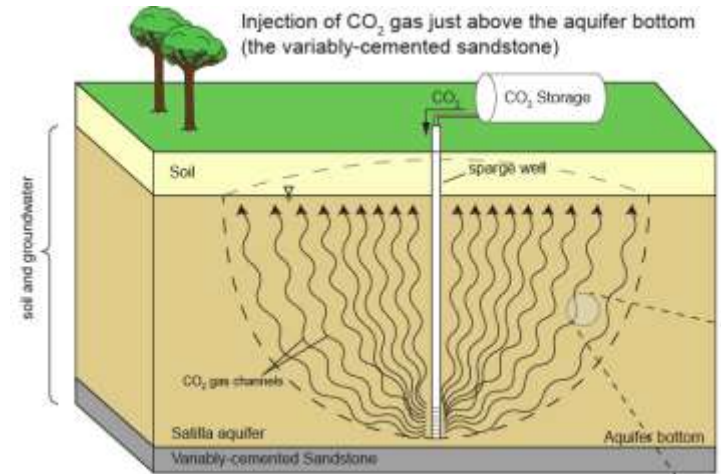


Table 1: Proposed Cleanup Plan technologies

Cleanup method	Acreage	Percent
Monitored natural recovery	256	62%
Removal (dredging)	84	20%
Enhanced natural recovery	48	12%
Capping (covering)	24	6%
Total	412	100%



Translation of information

- Very small or very large numbers
 - Relevant scale
- Maps

Just how small is a part per million or a part per billion?



In one Olympic-size swimming pool (660,000 gallons)

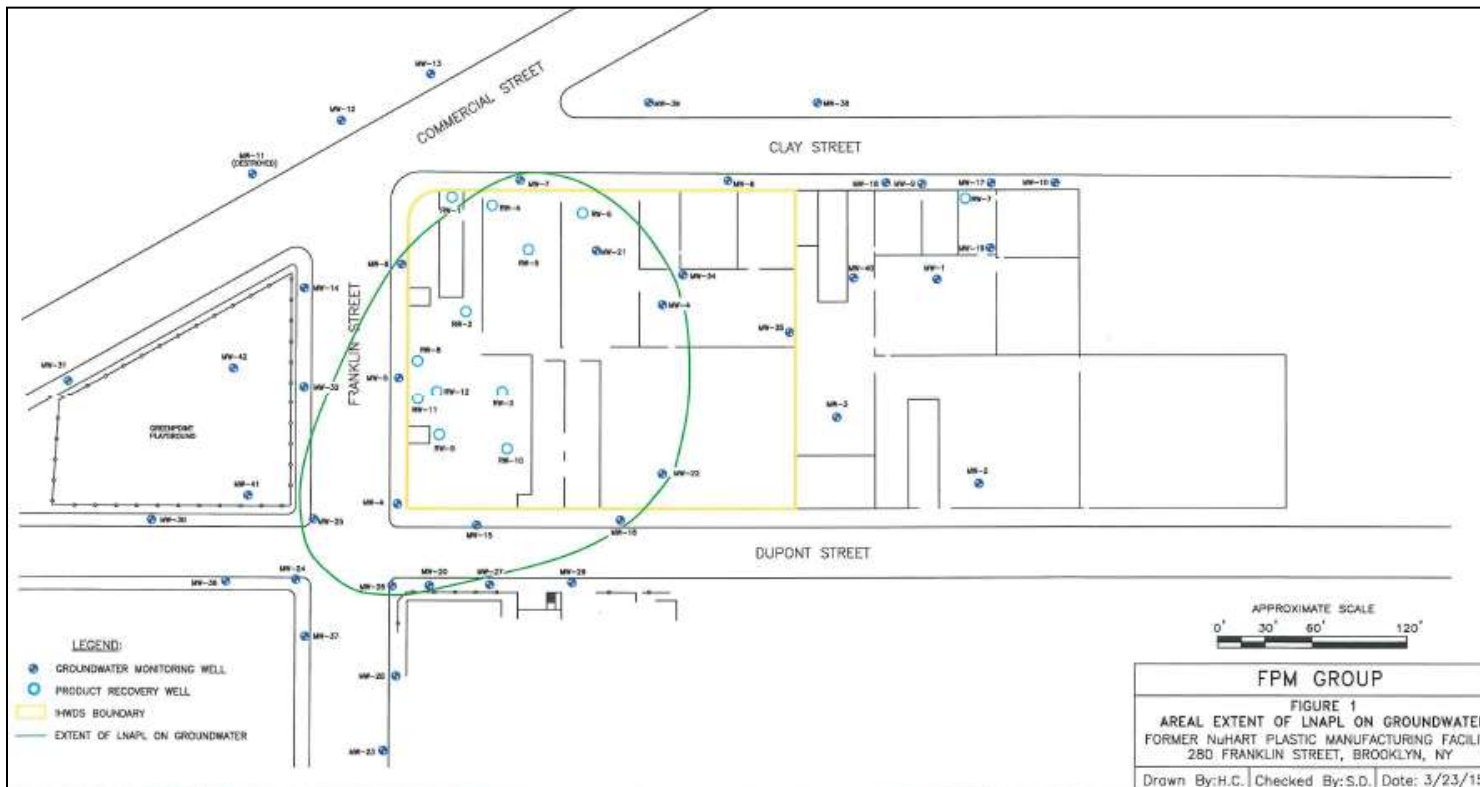


1 PPM = 1 1/4 two-liter bottles

1 PPB = 1/2 teaspoon



<http://www.abcwua.org/definitions-terms.aspx>



What is Superfund?



- Environmental program established to address abandoned hazardous waste sites.
- Fund established by the Comprehensive Environmental Response, Compensation and Liability Act of 1980 (CERCLA).
- CERCLA was enacted in the wake of the discovery of toxic waste dumps such as Love Canal in NY and Times Beach, MO in the 1970s



Love Canal

Superfund Sites in New York State

- Cleanup either managed by federal EPA or by the NY state Department of Environmental Conservation
- Newtown Creek: Federal Superfund Site
- NuHart: State Superfund Site



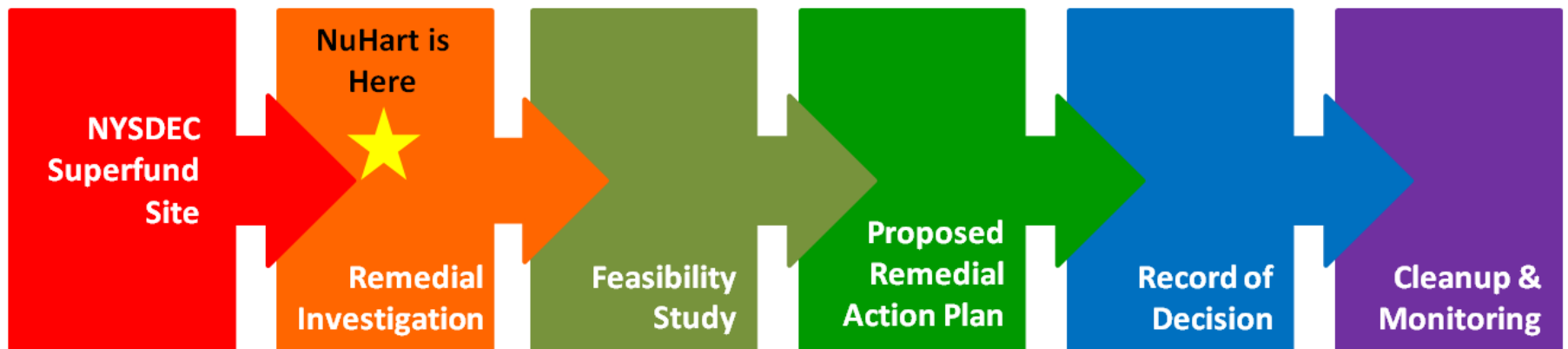
Photo Credit: greenpointers.com



Photo Credit: NAG

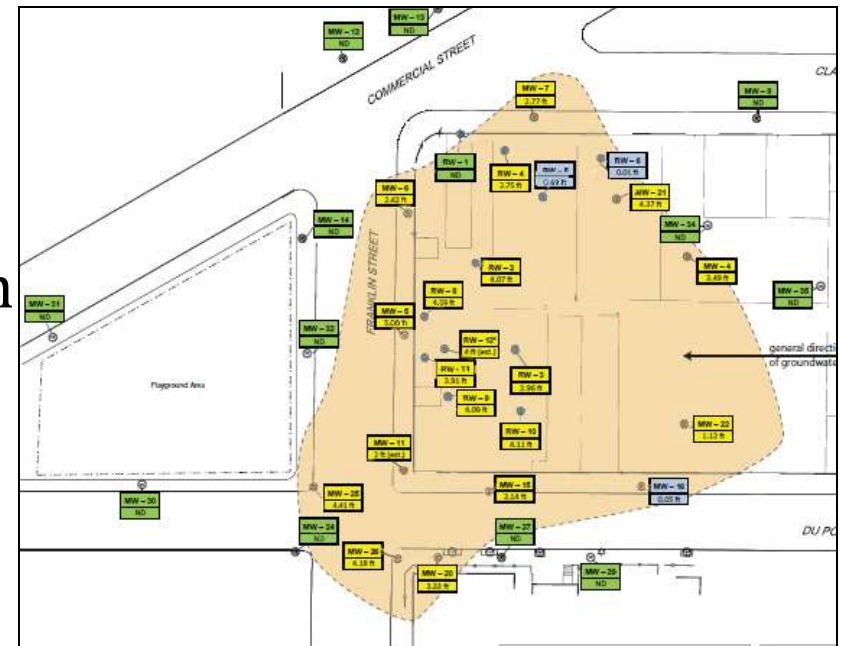
New York State Superfund Sites

- Site Characterization
 - The DEC and DOH determine whether a site is a hazardous waste site
- Remedial Investigation
 - Define nature and extent of contamination: conduct environmental sampling
- Feasibility Study
 - Determine most effective cleanup options for the site



New York State Superfund Sites

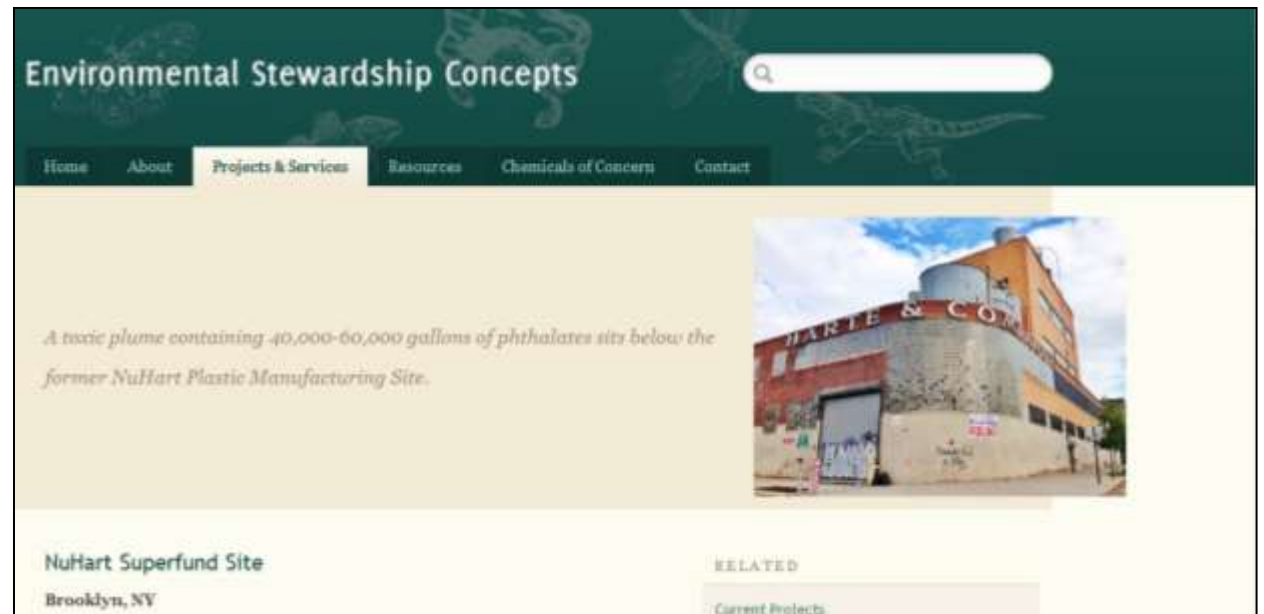
- Proposed Remedial Action Plan
 - Summarizes decisions for selected remedial action
- Record of Decision
 - Results from the RI
 - Remedy selection process
 - Selected Remedy
- Remedial Design and Construction
 - Technical requirements
 - Contingency Plan
 - O&M plans



Information Repository

- NuHart Site information: a section of community oriented resources accessible online

- Factsheets
- Presentations
- References
- Websites



<http://www.estewards.com/services/current-projects/nuhart-site/>



Next Meeting...

Neighbors Allied for Good Growth:

<http://nag-brooklyn.org/>

Sign up to get email updates