



# Portland Harbor Superfund Site: Proposed Plan & Feasibility Study

Dr. Peter deFur, QEP

Environmental Stewardship Concepts, LLC

August 31, 2016

# Portland Harbor Study Area

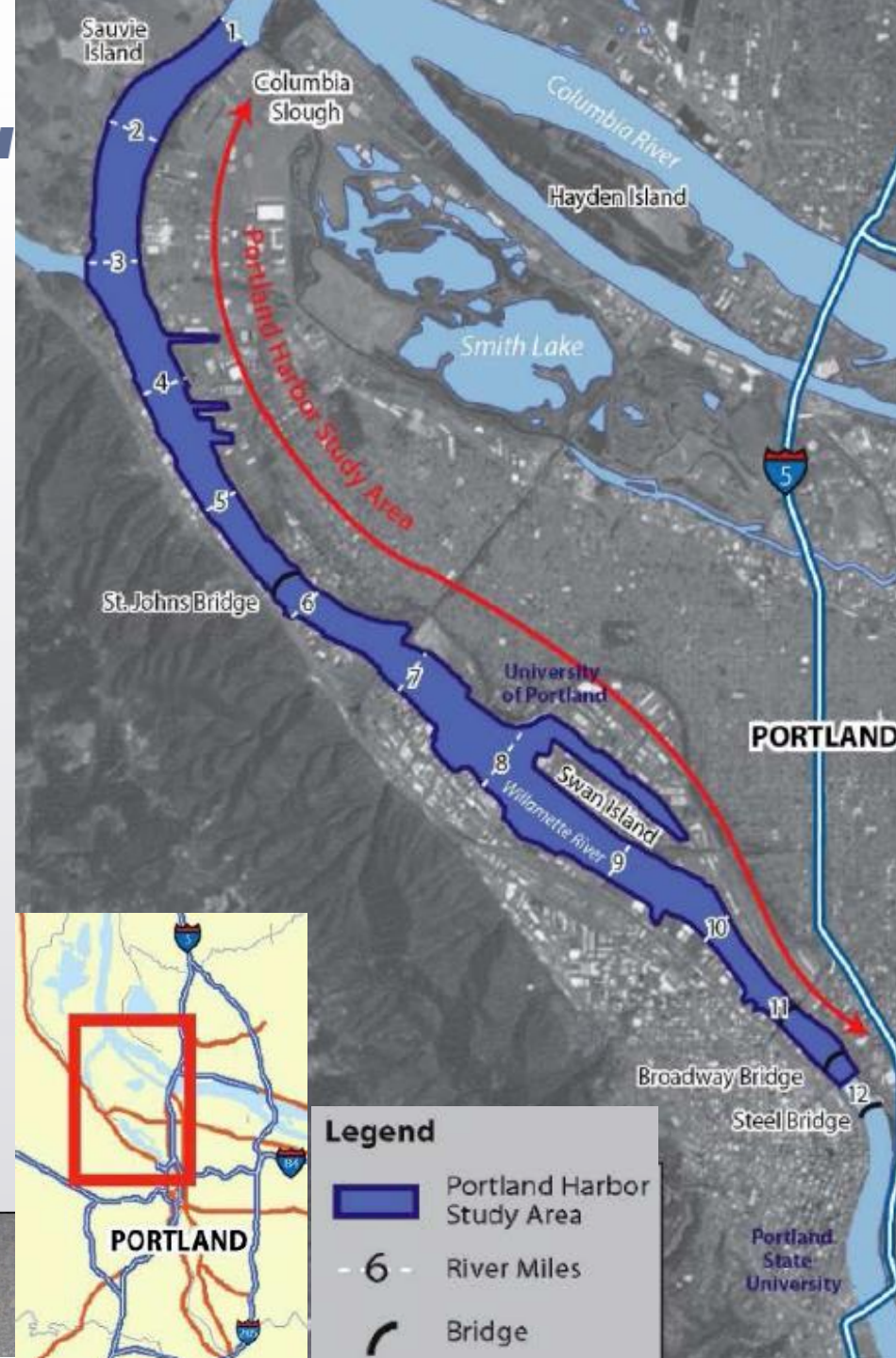


Figure 1. Map of Portland Harbor Superfund Site,  
Proposed Cleanup Community Fact Sheet

# Alternatives G and I

Remedial Activity	Alternative G	Alternative I
Dredging	571.1 acres 6,221,000-8,294,000 cy	167.1 acres 1,414,00-1,885,000 cy
Excavation	139,000 cy	103,000 cy
Capping	184.7 acres	64.1 acres
Ex Situ Treatment	156,000 – 208,000 cy sediments 9,500 cy soil	156,000 – 208,000 cy sediments 9,500 cy soil
ENR	19.5 acres	59.8 acres
MNR	1,391 acres	1,876 acres



# Alternative I

## Sediment management areas in Alternative I

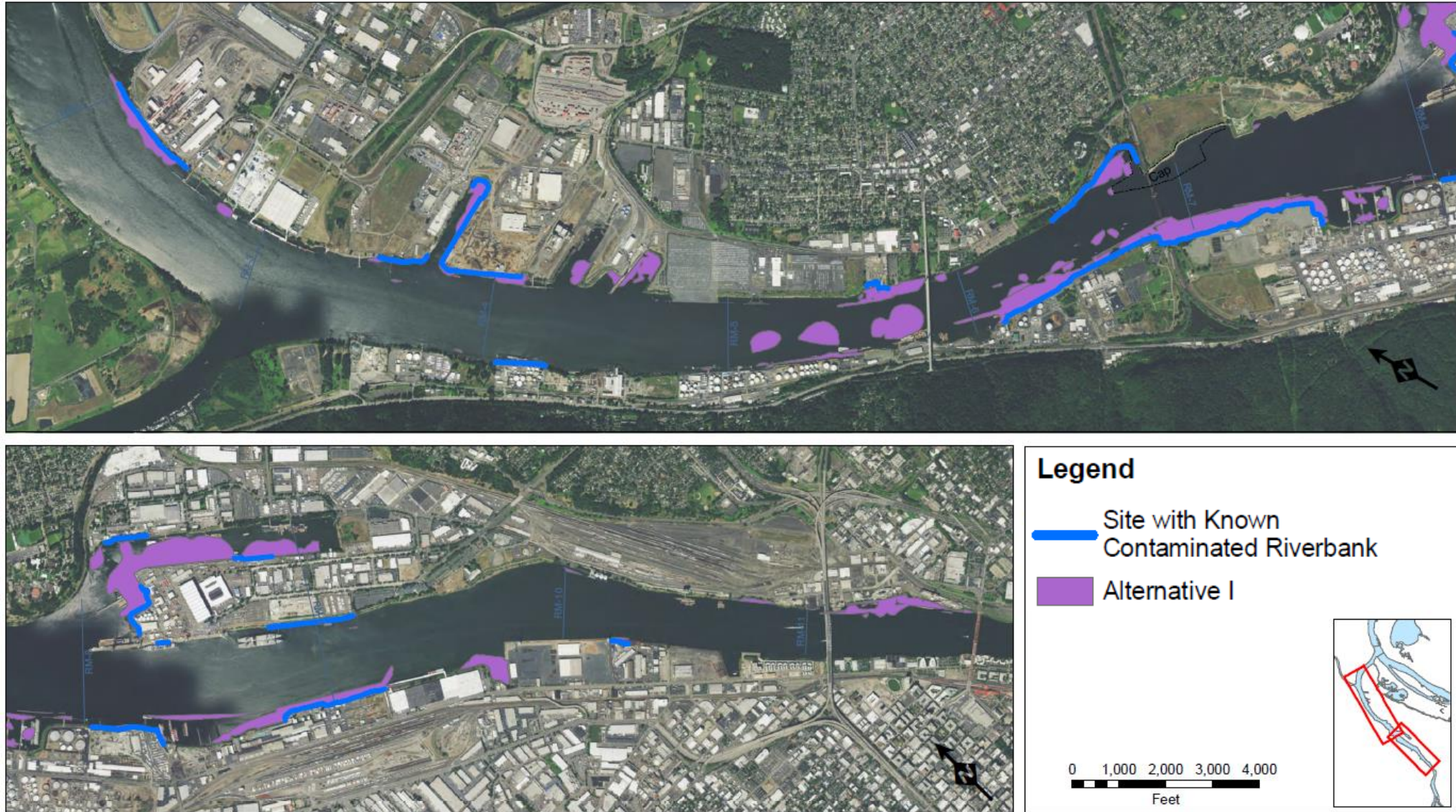


Figure 11h., 2016 Portland Harbor Proposed Plan



# Alternative I

## Technology Assignments in Alternative I

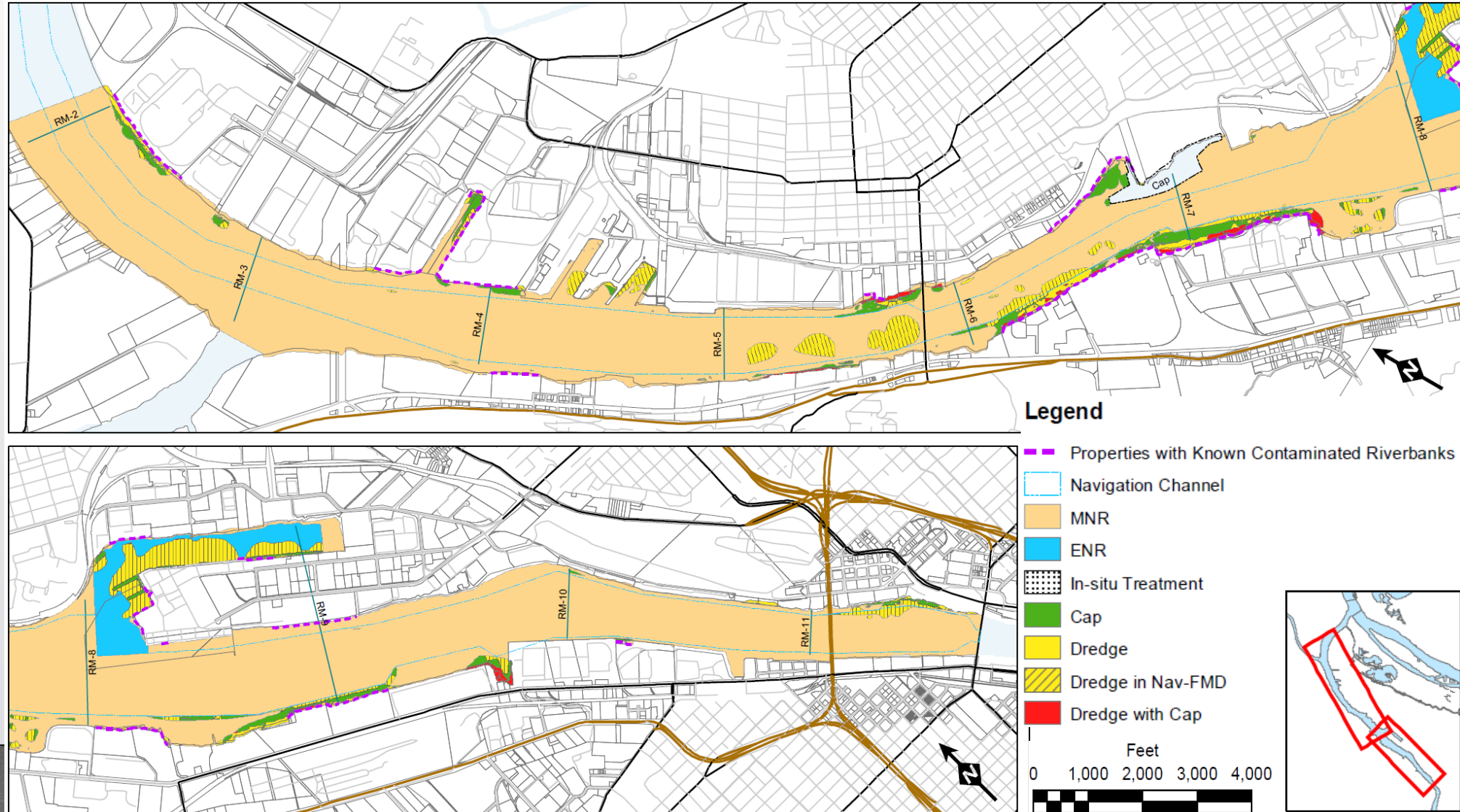


Figure 19a., 2016 Portland Harbor Proposed Plan



# Alternative G

## Sediment management areas in Alternative G

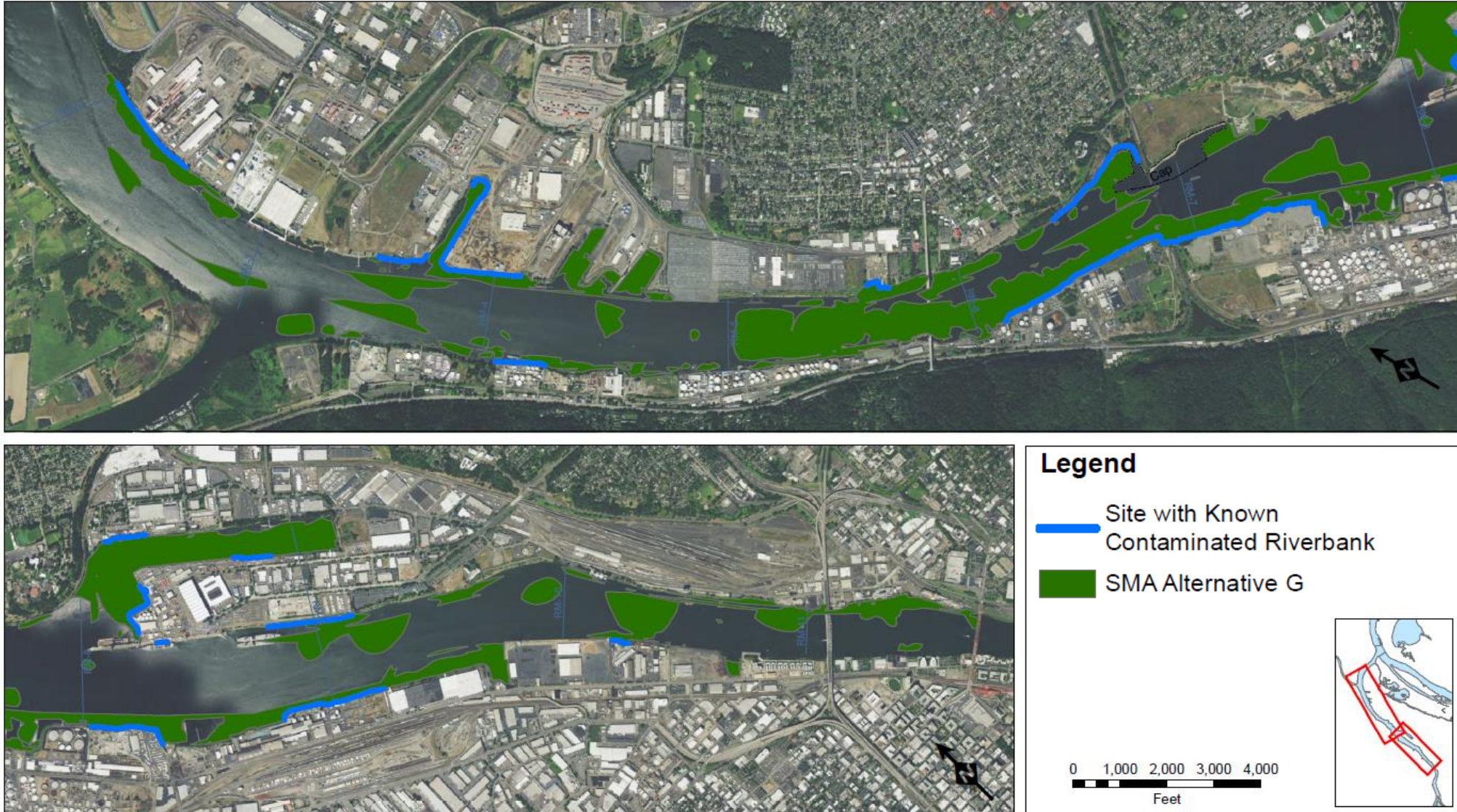
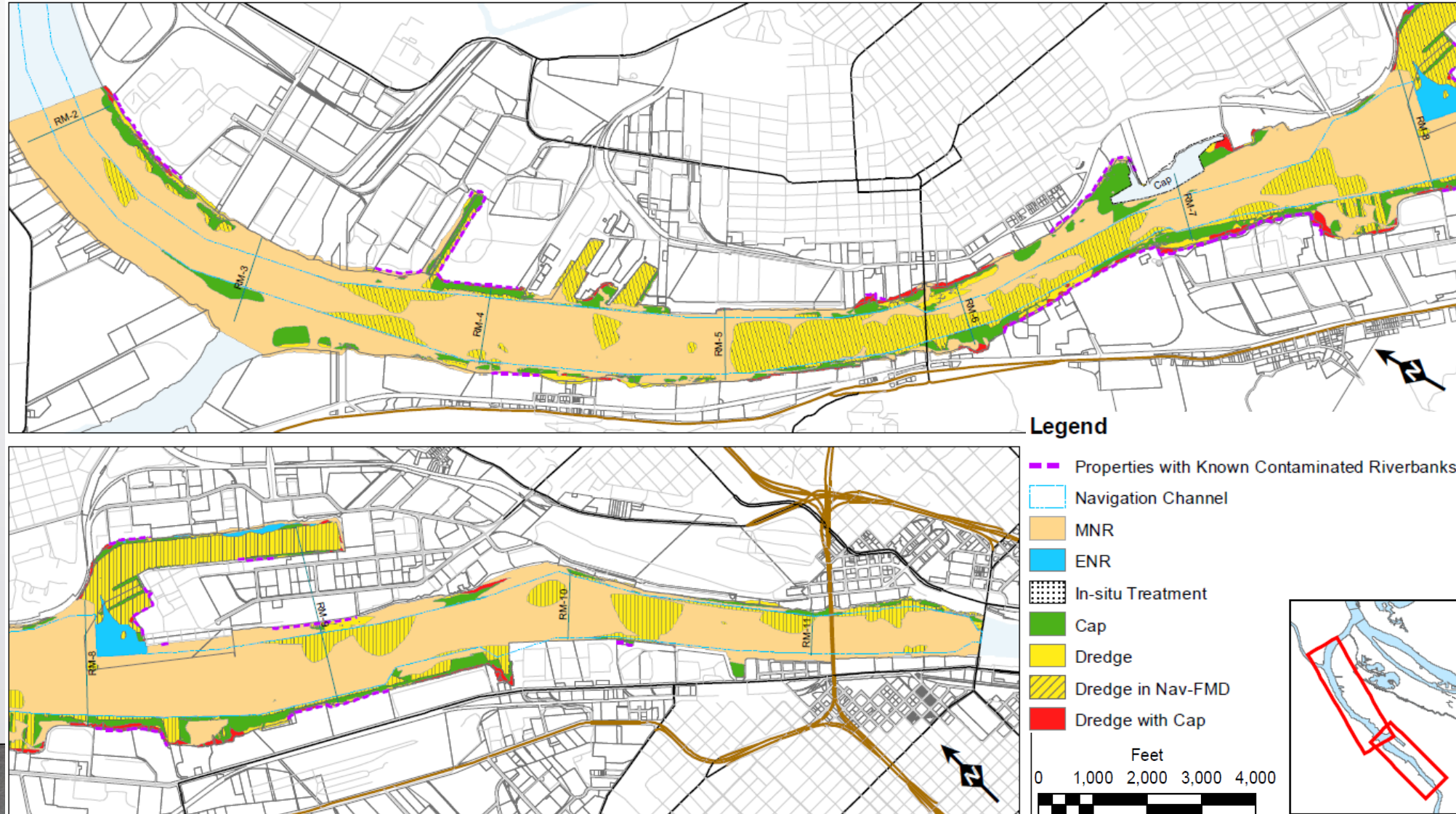


Figure 11f., 2016 Portland Harbor Proposed Plan



# Alternative G

## Technology Assignments in Alternative G





## Alternative G Enhancements

- Increased shoreline remedial action
- Increased dredging--Remove additional contaminated surface sediments

## What Must Be In the Record of Decision?

- Legally binding source cleanup from Oregon
- Performance bonds
- Fish tissue monitoring
- Habitat restoration fully paid by PRPs
- No Separate Operable Units
- Monitoring during the cleanup- water, air, sound, odor
- Community Involvement





# Next Steps

- Public comment period **June 9 – September 6**

Submit Comments to: **harborcomments@epa.gov**

OR

**Attn: Harbor Comments**

**U.S. EPA, 805 SW Broadway, Suite 500**

**Portland, OR 97205**

- Additional information

<http://www.portlandharborcag.info>

<http://www.cleanupportlandharbor.org/>

**On Facebook:** Clean-up the Willamette River Superfund Site

- EPA responds to public comments and makes final decision