



## Juba Teaching Hospital, South Sudan Health Systems Strengthening Project

Date: April 27, 2018	Prepared by: Odongo Bonny Oryem
<b>I. Demographic Information</b>	
1. City & State: Juba, Central Equatoria, Republic of South Sudan	
2. Organization: Real Medicine Foundation, South Sudan ( <a href="http://www.realmedicinefoundation.org">www.realmedicinefoundation.org</a> ) Medical Mission International ( <a href="http://www.mminternational.org.uk">www.mminternational.org.uk</a> )	
3. Project Title: Juba Teaching Hospital: Health Systems Strengthening	
4. Reporting Period: January 1 – March 31, 2018	
5. Project Location (region & city/town/village): Juba Teaching Hospital, Juba County, Central Equatoria State, Republic of South Sudan	
6. Target Population:  Direct project beneficiaries are approximately 444,680 people living in Juba and the immediate surrounding areas, projected from the 2008 South Sudan Population and Housing Census. Including referrals from South Sudan's 10 states, the hospital serves the country's population of 10.46 million indirectly.	
<b>II. Project Information</b>	
7. Project Goals:  To improve the quality and sustainability of medical and surgical services provided at Juba Teaching Hospital (JTH).  Juba Teaching Hospital is the only national referral hospital in the whole country of South Sudan and is located in the capital city of Juba, Central Equatoria State. With an estimated population of 10.46 million (based on annual population growth of 3% from a population census conducted in 2008) and lack of proper functioning primary healthcare facilities upcountry, many South Sudanese have nowhere to go but to this national referral hospital. Some military and police personnel also share these limited facilities with civilians.  Juba Teaching Hospital is directly funded by the central government through the National Ministry of Health of South Sudan. Medical supplies and maintenance are handled through the National Ministry of Health, with supplements coming from United Nations agencies and NGOs. The supplies are irregular, forcing patients to buy most of the consumables and pharmaceuticals from private pharmacies. Due to the high level of poverty and current economic situation, most vulnerable patients are not able to afford modern medicine, hence increasing patient mortality in Juba.	
8. Project Objectives:	
<ul style="list-style-type: none"> <li>• Improve patient wards and build infrastructure within Juba Teaching Hospital.</li> <li>• Assist in improving conditions for providing health care at Juba Teaching Hospital, including the policies and management of regular and medical waste.</li> <li>• Rehabilitate and/or purchase new medical equipment.</li> <li>• Provide basic medical supplies, disposables, and pharmaceuticals for Juba Teaching Hospital starting with the Pediatric department, complementing those provided by the Ministry of Health.</li> </ul>	

- Organize on-site clinical training, including general equipment usage, respectful maternity care and respectful health care, and psycho-trauma support.

9. Summary of RMF/MMI-sponsored activities carried out during the reporting period under each project objective (note any changes from original plans):

- Purchased and installed a high-power generator for RMF's office on the premises of Juba Teaching Hospital (JTH), which can provide support to JTH when needed.
- Donated one electric blood suction machine to support the hospital's main operating theatre during operations.
- Provided a top-up allowance for one public health officer to support RMF in JTH activities.
- Funded the installation of a prefabricated office space for the Juba Teaching Hospital (JTH) Pharmaceutical unit, following a request placed by JTH administration after the displacement of the unit due to ongoing construction within the hospital.
- Continued to support the hospital's human resources by paying the monthly salary of a highly experienced, registered midwife who is heading the Maternity department of Juba Teaching Hospital (JTH).
- Continued to support the hospital's human resource capacity by providing one RMF registered nurse, now serving in the Gynecology department.
- Facilitated cleaning of the hospital premises and continued to support RMF cleaners attached to the Surgical Emergency unit to supplement the few cleaners maintained by the Ministry of Health (MOH), including procurement of adequate cleaning materials.
- Continued monitoring and mentorship of trained healthcare professionals on the usage of Health eVillages tablets.
- Facilitated and coordinated weekly meetings with the MOH, Health Link, HPF, UN agencies, and partners on how to improve services at JTH.
- Continued to support high-speed Wi-Fi internet services at RMF's office on the premises of Juba Teaching Hospital.

10. Results and/or accomplishments achieved during this reporting period:

RMF's Health Systems Strengthening Project, focused on Juba Teaching Hospital (JTH), has achieved the following milestones during this reporting quarter through our committed partnership with the National Ministry of Health, JTH administration, and JTH staff.

- The Pharmaceutical department of Juba Teaching Hospital now has an office space, following the installation of a prefabricated unit by RMF.
- A high-power generator has been installed and is currently serving both RMF's office and the hospital's Pharmaceutical department.
- The UNV midwives in the Maternity ward have become master trainers after receiving three days of training on Respectful Health Care (RHC) and Psychological First Aid in the previous quarter. They are implementing the concepts of RHC/Psychological First Aid and mentoring JCONAM students during their clinical placement.
- RMF supported a registered midwife who continued to serve the whole Maternity unit and mentor students from JCONAM. This has positively changed maternal outcomes at Juba Teaching Hospital.
- RMF supported one registered nurse, posted in the Gynecology department by Juba Teaching Hospital's management, to bridge the staffing gap in the unit and share her expertise.
- Monthly provision of adequate cleaning materials to the Surgical Emergency unit and support of 3 cleaners ensured proper cleaning and maintenance of hygiene in the wards and the surroundings.
- One block of the Accident and Emergency (A&E) department upgraded by RMF continued to house the Dental department, Outpatient department, and Radiology unit of the hospital, allowing these services to be provided in a well-maintained structure with effective infection control measures.
- We facilitated and performed regular monitoring and supportive supervision of the JTH healthcare workers and janitors on implementation of waste management policy guidelines.
- The previously repaired hospital septic tank has reduced WASH-related infections and is eliminating a public health hazard.

- The improved RMF storage facility continues to provide a safe space for storing nutrition and health supplies.
- The ANC unit continued to enroll women in the program using ANC cards printed and provided by RMF.
- We continued to support high-speed Wi-Fi internet service at RMF's Juba office, providing internet access to Juba Teaching Hospital's doctors and nurses and RMF's team.
- The two Health eVillages (HeV) master trainers, along with Juba Teaching Hospital's nurses, midwives, and doctors, continued to benefit from the HeV tablets. JTH staff is now able to do quick reference checks, hence improving the quality of care and general services they provide and ensuring evidence based medical services guided by the information preloaded in the tablets.
- In collaboration with the Chinese government, there is ongoing construction of a new, modern Maternity unit at Juba Teaching Hospital (JTH).

11. Impact this project has on the community (who is benefiting and how):

- This project has offered employment opportunities for South Sudanese nationals in both technical and supporting positions.
- The Gynecology department continued to benefit from the services of an RMF-supported registered nurse, who is filling a human resources gap for the hospital.
- Maternal outcomes at Juba Teaching Hospital (JTH) have improved following RMF's support of human resources at the Maternity department, as well as training midwives of Respectful Health Care (RHC). The whole community in Juba and referrals from other parts of the country benefit from the maternal and neonatal services offered at JTH.
- The Accident and Emergency (A&E) department, upgraded by RMF, continued to offer quality outpatient and emergency services and is now housing the Dental department.
- The Surgical Emergency unit is kept clean, reducing nosocomial infections, and the premises are conducive to the health and well-being of healthcare providers, patients, and visitors.
- JTH premises and the surrounding areas are preserved and kept clean and safe through regular removal of the waste which had posed a threat to the healthcare workers, patients, surrounding community, and the environment. This process is supported by a public health officer.
- The working conditions of JTH's janitorial workers have been improved through implementation of the waste management policy, developed with the support of RMF staff.
- The high-speed Wi-Fi internet service at RMF's office provides internet access to doctors, nurses, midwives, and RMF's team, facilitating research and improving continuous medical education for healthcare professionals and coordination for RMF's team.
- The healthcare professionals provided with Health eVillages (HeV) tablets continued to provide evidence-based healthcare services for patients by using the devices as a guide.
- The trained healthcare professionals at JTH continued to practice the concepts of Respectful Health Care (RHC) and Psychological First Aid, enabling them to provide optimal care and identify and manage traumatized patients.

12. Number served/number of direct project beneficiaries:

- Direct project beneficiaries are approximately 444,680 people living in Juba and the immediate surrounding areas, projected from the 2008 Sudan Population and Housing Census.
- Students from JCONAM, Juba Nursing School, Juba Health Science Training Institute, the Central Equatoria School of Nursing/Midwifery, and Juba University College of Medicine are also direct beneficiaries of this project since all do their clinical practice in Juba Teaching Hospital.

13. Number of indirect project beneficiaries (geographic coverage):

1. 10.46 million South Sudanese from all ten states, as per the 2008 Sudan Population and Housing Census. Juba Teaching Hospital is the only national referral hospital for the entire country.
2. All business communities from neighboring and other African countries, the working class from NGO/INGOs, and UN agencies, etc.

14. If applicable, please list the medical services provided:

N/A

15. Please list the most common health problems treated through this project.

- Malaria
- Diarrheal Diseases
- Intestinal Worms
- Respiratory Tract Infections
- Urinary Tract Infections
- Skin Infections
- Measles
- Malnutrition
- Enteric Fever
- Burns
- Trauma (i.e. Traffic Accidents)
- Gunshot Wounds
- TB and HIV/AIDS

16. Notable project challenges and obstacles:

The project has made notable progress during this reporting quarter, but has faced challenges in the following areas:

1. Continued power instability at Juba Teaching Hospital hinders effective and efficient service delivery, especially at night. The lack of reliable electricity has contributed significantly to the maternal and under-5 mortality rates at Juba Teaching Hospital (JTH).
2. Frequent interruptions of running water in the hospital compromises cleaning and effective infection control measures and normal functioning of the operating theatres and labor suite.
3. Irregular and inadequate supply of pharmaceuticals, consumables, and laboratory reagents forces patients to buy most of the needed supplies from private pharmacies. Due to poverty and rising inflation, most people are not able to afford modern medicine, which increases patient mortality at Juba Teaching Hospital (JTH).
4. Delayed staff remunerations by the MOH negatively affects the quality of service delivery at JTH.
5. Many healthcare professionals are leaving the hospital for other employment.
6. The demolition of the Maternity, Dental, Physiotherapy, and Statistical departments by the MOH (with ongoing construction of new buildings) led to the displacement of patients, healthcare workers, and equipment, resulting in crowded areas at Juba Teaching Hospital (JTH).

17. If applicable, plans for next reporting period:

- Continue to implement RMF's annual work plan, guided by our MOU with the Ministry of Health (MOH).
- Finalize and publish the Maternal Near-Miss Audit report.
- Continue to lobby for more financial resources to support the hospital.
- Recruit additional staff, particularly for the Maternal and Child Health (MCH) department.
- Install high-speed Wi-Fi internet services in the Obstetrics department.
- Provide tablets/iPads downloaded with current obstetrics and gynecological cases to improve knowledge on clinical diagnosis and management of cases.
- Continue to monitor the impact of the Health eVillages devices.
- Continue to organize on-site clinical training.
- Continue trainings on Respectful Health Care and Respectful Maternity Care and continue to monitor and evaluate the impact of RMF's Respectful Maternity Care Project through continued supervision guided by RMF's RMC supervisory checklist, specifically developed for this purpose.

18. If applicable, summary of RMF/MMI-sponsored medical supply distribution and use:

N/A

19. Success story(s) highlighting project impact:

See Project Photos

### III. Financial Information

20. Detailed summary of expenditures within each budget category as presented in your funded proposal (file attachment is fine). Please note any changes from plans.

Provided separately

## Project Photos



JCONAM third-year midwifery student now working independently in the Maternity ward.



Many JCONAM students complete their clinicals at JTH.

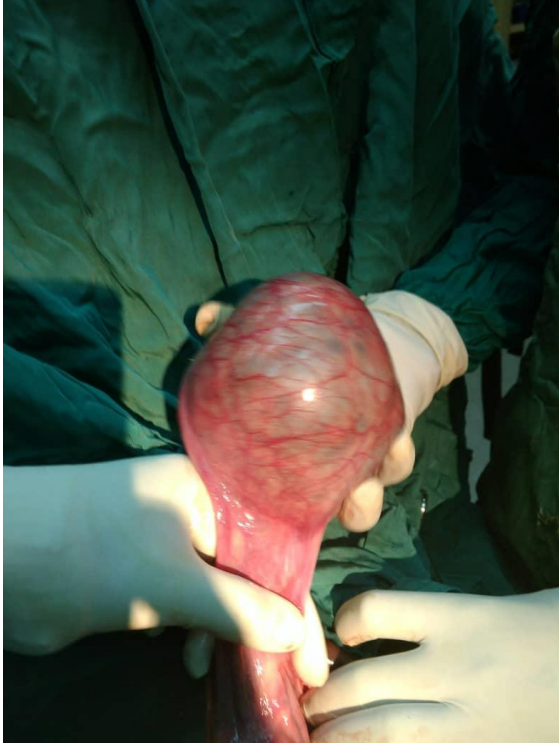


Senior surgeon mentoring intern doctors after an emergency laparotomy in the A&E department



JTH doctors performing an ovarian cystectomy





Large ovarian cyst removed at the RMF-supported Gynecology and Obstetrics department



A mother safely underwent a total hysterectomy.



New maternity construction is ongoing.



New Pediatric ward construction is ongoing.



A&E ward renovated by RMF



RMF's new generator at JTH, serving our Juba office.