

Reference information

This section provides information on system limitations, emergency planning and smoke and heat detector locations. It also provides a place to list your sensor and module locations and other programming values.

Alarm system limitations

Not even the most advanced alarm system can guarantee protection against burglary, fire, or environmental problems. All alarm systems are subject to possible compromise or failure-to-warn for a variety of reasons.

- If sirens are not placed within hearing range of persons sleeping in remote parts of the premises, or if they are placed behind doors or other obstacles.
- If intruders gain access through unprotected points of entry or areas where sensors have been bypassed.
- If intruders have the technical means of bypassing, jamming, or disconnecting all or part of the system.
- If power to sensors is inadequate or disconnected.
- If freeze or any environmental sensors are not located in areas where the appropriate condition can be detected.
- If smoke does not reach a smoke sensor. For example, smoke sensors cannot detect smoke in chimneys, walls, roofs, or areas blocked by a closed door. Sensors may not detect smoke in other levels of the building. Sensors may not warn in time when fires are caused by smoking in bed, explosions, improper storage of flammables, overloaded electrical circuits, or other hazardous conditions.
- If telephone lines are out of service.

Inadequate maintenance is the most common cause of alarm failure. Therefore, test your system at least once per week to be sure sensors, sirens, and phone communication are all working correctly.

Although having an alarm system may make you eligible for reduced insurance premiums, the system is no substitute for insurance.

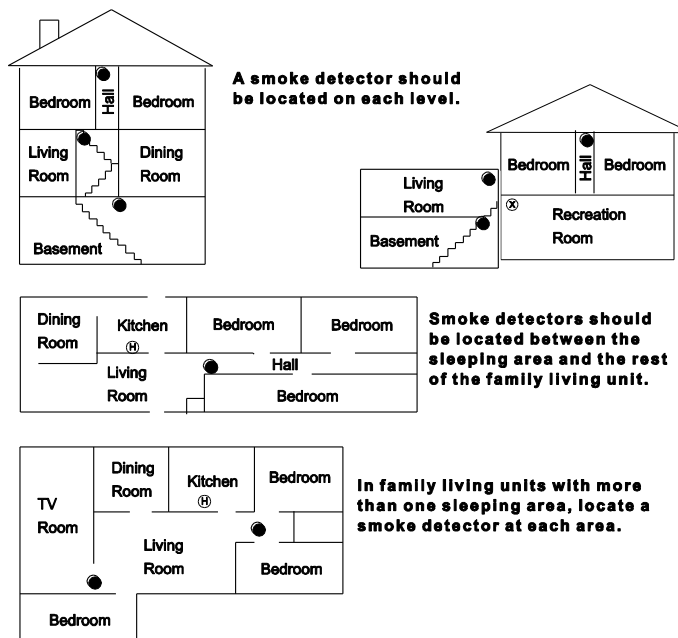
WARNING: Security system devices cannot compensate you for the loss of life or property.

Emergency planning

Since an emergency is always unexpected, you should develop plans to help prepare for a variety of emergencies. Periodically discuss and rehearse emergency plans to include the following:

- Understand how to use your security system.
- Know the normal state of doors and windows: open, closed, or locked.
- Escape fast! (Do not stop to pack).
- Use a different escape route if closed doors feel hot to the touch.
- Crawl and hold your breath as much as possible to help reduce smoke inhalation during your escape.
- Meet at a designated outdoor location.
- Emphasize that no one should return to the premises if there is a fire.
- Notify the fire department from a neighbor's phone.
- Emphasize that no one should enter the premises if they hear sirens in the house.
- If you arrive at the premises and hear sirens, do not enter. Call for emergency assistance with your cell phone, or from a neighbor's phone.

Smoke Detector Placement



NOTE: Ceiling-mounted smoke detectors should be located in the center of the room or hall, or not less than 4 inches from the wall. When the detector is mounted on the wall, the top of the detector should be 4 to 12 inches from the ceiling.

NOTE: Do not install smoke detectors where normal ambient temperatures are above 100°F or below 40°F. Also, do not locate detectors in front of AC/ Heat registers or other locations where normal air circulation will keep smoke from entering the detector.

NOTE: Additional information on household fire warning is available at nominal cost from: The National Fire Protection Association, Batterymarch Park, Quincy, MA 02269. Request Standard No. NFPA74.

- Required smoke detector
- Ⓜ Heat detector
- ⊗ Indicates smoke detector is optional if door is not provided between basement and recreation rooms.

Your floor plan

Use the following guidelines when drawing your floor plan:

- Show all building levels.
- Show exits from each room (two per room are recommended).
- Show the location of all security system components.
- Show the location of any fire extinguishers.

Cleaning the touch screen

If necessary, use a soft lint-free cloth to clear smudges on the touch screen; do not use glass cleaner on the touch screen.

Disposal

Dispose of all equipment in accordance with local requirements.

Contact your installer for more information.

Sensor and module locations

Use Table 15 below to list your sensor and module locations.

Table 15: Sensor and module locations

Sensor number	Sensor name	Sensor type	Location
Example	Front door	Door/window sensor	Front door
1.			
2.			
3.			
4.			
5.			
6.			
7.			
8.			
9.			
10.			
11.			
12.			
13.			
14.			
15.			
16.			
17.			
18.			
19.			
20.			
21.			
22.			
23.			
24.			
25.			

Sensor number	Sensor name	Sensor type	Location
26.			
27.			
28.			
29.			
30.			
31.			
32.			
33.			
34.			
35.			
36.			
37.			
38.			
39.			
40.			

Access codes

Use Table 16 below to record your access codes.

Table 16: Access codes

Code description	Code
Master code	
User code 1	
User code 2	
User code 3	
User code 4	
User code 5	
User code 6	
User code 7	
User code 8	
Duress code	

Delays

Use Table 17 on page 38 to record your delay times.

Table 17: Delays

Delay	Time
Exit delay	
Entry delay	

Simon XTi-5 system quick reference

Task	Instructions
Level 1: Disarm the system	Control panel: Press PRESS TO DISARM and enter your access code. Key fob: Press Unlock. Telephone: Press 1.
Level 2: Arm doors and windows	Control panel: Press PRESS TO ARM, then press Doors + Windows Only and enter your access code (if required). Key fob: Press Lock. Telephone: Press 2.
Level 3: Arm motion sensors	Control panel: Press PRESS TO ARM, then press Motion Sensors Only and enter your access code (if required). Telephone: Press 3.
Level 4: Arm doors, windows, and motions	Control panel: Press PRESS TO ARM, then press Arm All and enter your code (if required) Key fob: Press Lock twice. Telephone: Press 2 3.
Activate no delay	Control panel: Press PRESS TO ARM, set Entry Delay to OFF, then press Doors+Windows Only. Key fob: Press Lock, (if programmed). Telephone: Press 2 3.
Activate panic alarm	Control panel: Enter the Emergency Screen and press Panic, Police, or Fire. Key fob: Press and hold Lock and Unlock for 3 seconds.
Check system status	Control Panel: Enter the Status & Settings screen and press the Listen icon by Panel Status. Telephone: Press 0.
Toggle chime or special chime mode	Control panel: Enter the Status & Settings menu and scroll to Chime or Special Chime, press On or Off to set the value.
Bypass a sensor	Control panel: Enter the Status & Settings menu, scroll to Direct Bypass Press ENTER, enter your master code, scroll to the sensor, and then press BYPASSED or NOT BYPASSED to set the value.